

UNITED STATES - WEST COAST

CALIFORNIA

ANACAPA PASSAGE

Mercaator Projection
Scale 1:40,000

North American Datum of 1983
(World Geodetic System 1984)

SOUNDINGS IN FATHOMS
AT MEAN LOWER LOW WATER

NOAA WEATHER RADIO BROADCASTS
The NOAA Weather Radio stations listed below provide continuous weather broadcasts. The reception range is typically 20 to 40 nautical miles from the stations, but can be as much as 100 nautical miles for stations at high elevations.

Santa Barbara Marine CA WVF-62 162.475 MHz
Santa Barbara CA WVF-34 162.48 MHz

Additional information can be obtained at nauticalcharts.noaa.gov.

HORIZONTAL DATUM

The horizontal reference datum of this chart is North American Datum of 1983 (NAD 83), which for charting purposes is considered equivalent to the World Geodetic System 1984 (WGS 84). Geographic positions referred to the North American Datum of 1983 must be corrected an average of 0.012' northward and 3.446' westward to agree with this chart.

NOTE X

Within the 12-nautical mile Territorial Sea, established by Presidential Proclamation, some Federal laws apply. The Three Nautical Mile Line, previously identified as the outer limit of the territorial sea, is retained as it continues to depict the jurisdictional limit of the other laws. The 12-nautical mile Territorial Sea Boundary of the Gulf Coast of Florida, Texas, and Puerto Rico, and the Three Nautical Mile Line agreement remain in most cases the inner limit of Federal fisheries jurisdiction and the outer limit of the jurisdiction of the states. The 24-nautical mile Contiguous Zone and the 200-nautical mile Exclusive Economic Zone were established by Presidential Proclamation. Unless listed by treaty or the U.S. Supreme Court, these maritime limits are subject to modification.

NATIONAL MARINE SANCTUARIES

NATIONAL MARINE SANCTUARIES & MARINE PROTECTED AREAS
Marine Protected Areas are protected areas, administered by NOAA, which contain sensitive and diverse natural and cultural resources. These areas are particularly sensitive to environmental damage such as spills of oil and other hazardous materials, discharges and diversions. Exercise particular caution and follow applicable regulatory requirements when transiting these areas. A full description of Sanctuary regulations may be found in 16 CFR 922 and in the U.S. Coast Pilot. A full description of the National regulations governing the Marine Protected Areas located within Channel Islands National Marine Sanctuary boundaries may be found in 16 CFR 922 and 50 CFR 600. A full description of the state regulations governing the Marine Protected Areas located within Channel Islands National Marine Sanctuary boundaries may be found in Title 14 California Code of Regulations (CCR) section 652.

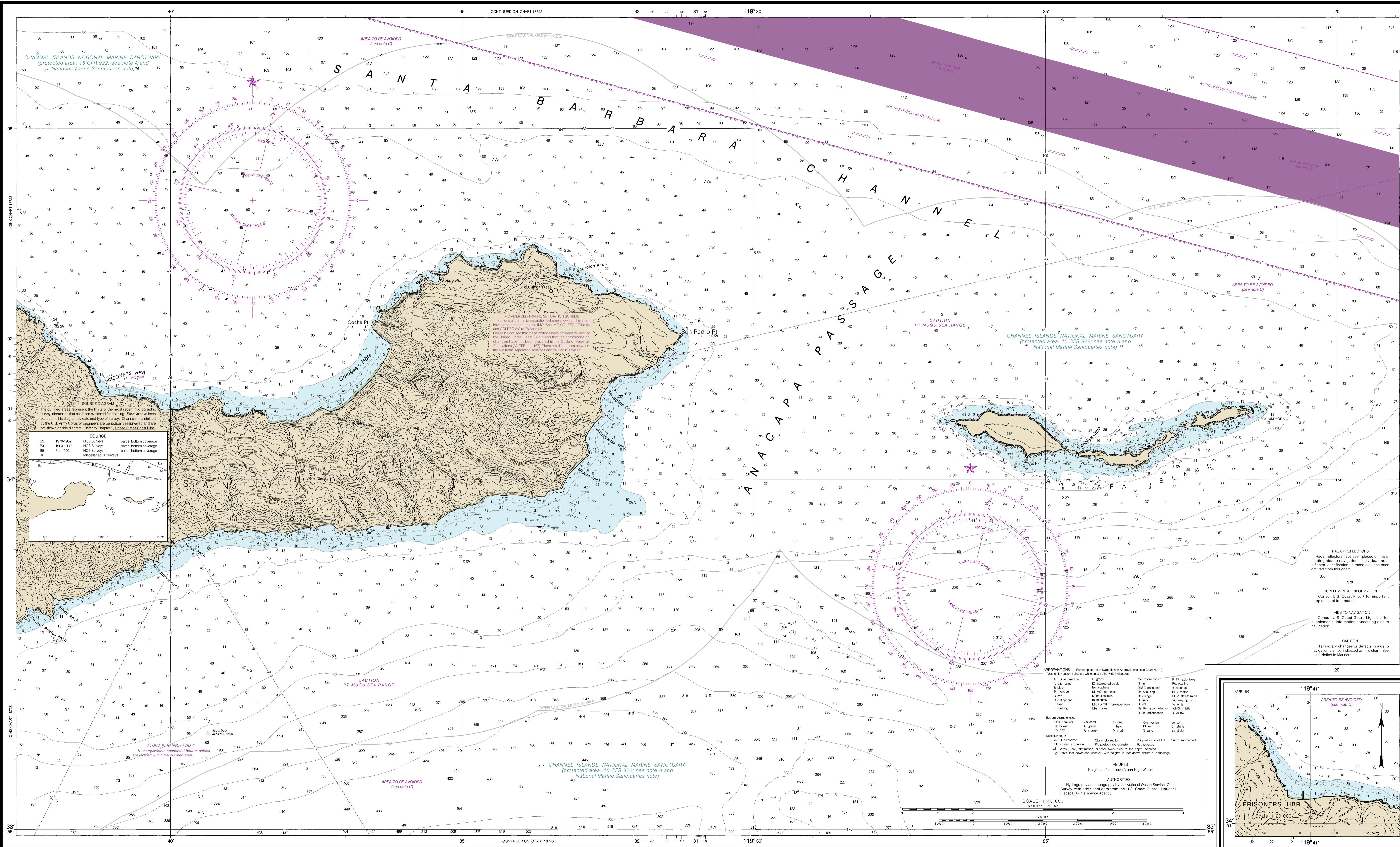
NOTE B

One-way traffic lanes overlaid on this chart are recommended to be used by all vessels transiting between the points involved. They have been designed to aid in the prevention of collisions at the approaches to major harbors and along heavily traveled coastal waters, but are not intended in any way to supersede or to alter the applicable Rules of the Road. Separation zones are intended to separate inbound and outbound traffic and to be free of ship traffic. Separation zones should not be used except for crossing purposes. When crossing traffic lanes, and separation zones use extreme caution.

NOTE C

Navigation regulations are published in Chapter 2, U.S. Coast Pilot 7. Additions or revisions to Chapter 2 are published in the Notice to Mariners. Information concerning the regulations may be obtained at the Office of the Commandant, 11th Coast Guard District in Alameda, California or at the Office of the District Engineer, Corps of Engineers in Los Angeles, California. Refer to charted regulation section numbers.

NOAA encourages users to submit inquiries, discrepancies or comments about this chart at <http://www.nauticalcharts.noaa.gov/staff/contact.htm>.



18729

18729

18729

This is the Last Edition of this chart. It will be cancelled on Jul 31, 2024.

13th Ed., Oct. 2005, Last Correction, 1/29/2024. Cleaned through LHM, 10/24/2024, LHM, 1/24/2025.

If the chart does not measure as noted (1:40,000), the scale is not certified for navigation.

CAUTION
This chart has been corrected from the Notice to Mariners (NM) published weekly by the National Geospatial-Intelligence Agency and the Local Notice to Mariners (LNM) issued periodically by each U.S. Coast Guard district to the data shown in the lower left hand corner.

POLLUTION REPORTS
Report all spills of oil and hazardous substances to the National Response Center by 1-800-424-8802 (24 hrs), or to the nearest U.S. Coast Guard facility if telephone communication is impossible (33 CFR 153).

AREAS TO BE AVOIDED
All ships, except those bound to and from ports on one of the soundings in the "AREAS TO BE AVOIDED" in the table of carrying capacity, should avoid the "AREAS TO BE AVOIDED" in the table of carrying capacity and the "AREAS TO BE AVOIDED" in the table of carrying capacity.

CAUTION
Temporary changes or defects in aids to navigation are not indicated on this chart. See Local Notice to Mariners.

CAUTION
Temporary changes or defects in aids to navigation are not indicated on this chart. See Local Notice to Mariners.

CAUTION
Temporary changes or defects in aids to navigation are not indicated on this chart. See Local Notice to Mariners.

CAUTION
Temporary changes or defects in aids to navigation are not indicated on this chart. See Local Notice to Mariners.

CAUTION
Temporary changes or defects in aids to navigation are not indicated on this chart. See Local Notice to Mariners.

CAUTION
Temporary changes or defects in aids to navigation are not indicated on this chart. See Local Notice to Mariners.

CAUTION
Temporary changes or defects in aids to navigation are not indicated on this chart. See Local Notice to Mariners.

CAUTION
Temporary changes or defects in aids to navigation are not indicated on this chart. See Local Notice to Mariners.

CAUTION
Temporary changes or defects in aids to navigation are not indicated on this chart. See Local Notice to Mariners.

CAUTION
Temporary changes or defects in aids to navigation are not indicated on this chart. See Local Notice to Mariners.

CAUTION
Temporary changes or defects in aids to navigation are not indicated on this chart. See Local Notice to Mariners.

CAUTION
Temporary changes or defects in aids to navigation are not indicated on this chart. See Local Notice to Mariners.

CAUTION
Temporary changes or defects in aids to navigation are not indicated on this chart. See Local Notice to Mariners.

CAUTION
Temporary changes or defects in aids to navigation are not indicated on this chart. See Local Notice to Mariners.

CAUTION
Temporary changes or defects in aids to navigation are not indicated on this chart. See Local Notice to Mariners.

CAUTION
Temporary changes or defects in aids to navigation are not indicated on this chart. See Local Notice to Mariners.

CAUTION
Temporary changes or defects in aids to navigation are not indicated on this chart. See Local Notice to Mariners.

CAUTION
Temporary changes or defects in aids to navigation are not indicated on this chart. See Local Notice to Mariners.

CAUTION
Temporary changes or defects in aids to navigation are not indicated on this chart. See Local Notice to Mariners.

CAUTION
Temporary changes or defects in aids to navigation are not indicated on this chart. See Local Notice to Mariners.

CAUTION
Temporary changes or defects in aids to navigation are not indicated on this chart. See Local Notice to Mariners.

CAUTION
Temporary changes or defects in aids to navigation are not indicated on this chart. See Local Notice to Mariners.

CAUTION
Temporary changes or defects in aids to navigation are not indicated on this chart. See Local Notice to Mariners.

CAUTION
Temporary changes or defects in aids to navigation are not indicated on this chart. See Local Notice to Mariners.

Published at Washington, D.C.

U.S. DEPARTMENT OF COMMERCE
NATIONAL OCEANIC AND ATMOSPHERIC ADMINISTRATION
NATIONAL OCEAN SERVICE
COAST SURVEY

SOUNDINGS IN FATHOMS

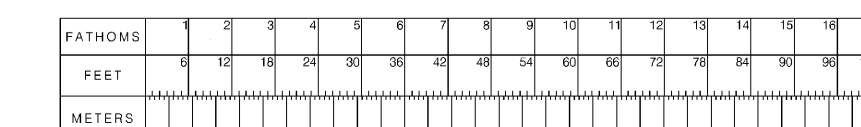
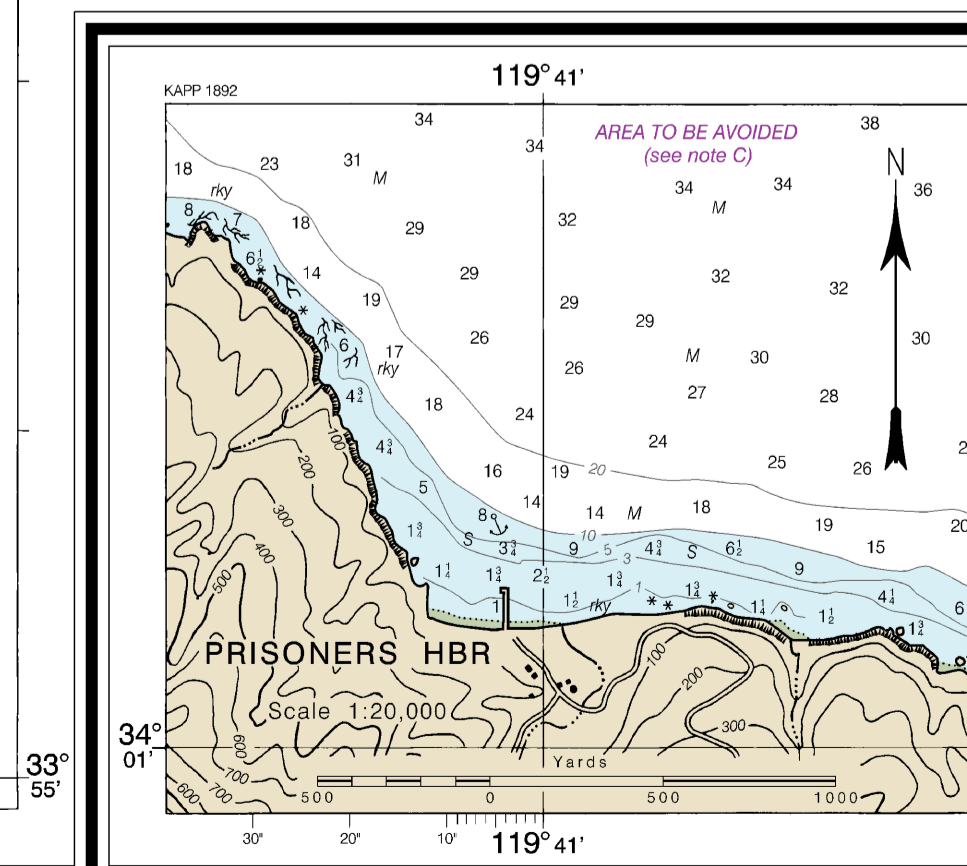


Table with 2 columns: FATHOMS and METERS. Rows show 0, 10, 20, 30, 40, 50, 60, 70, 80, 90, 100, 200, 300, 400, 500, 600, 700, 800, 900, 1000, 2000, 3000, 4000, 5000.



Anacapa Passage
SOUNDINGS IN FATHOMS - SCALE 1:40,000

SOUNDINGS IN FATHOMS