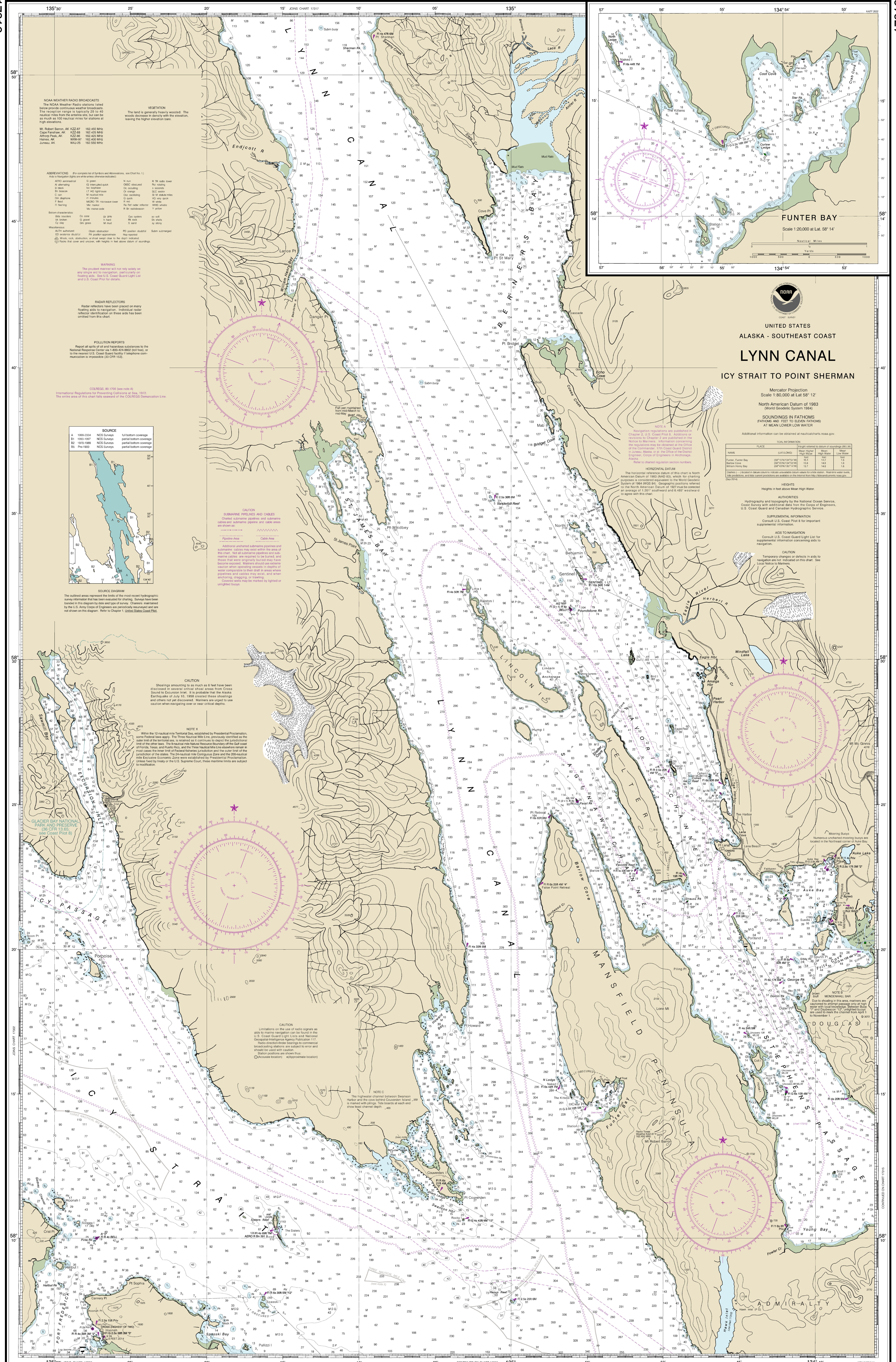


Form No. 5000 (Rev. 10-01) Use as Issued © 1999 NOAA NCEM



NOAA WEATHER RADIO BROADCASTS
The NOAA Weather Radio stations listed below provide continuous weather broadcasts. The reception range is typically 25 to 40 nautical miles from the antenna site, but can be as much as 100 nautical miles for stations of high elevation.

ABBREVIATIONS For complete list of symbols and abbreviations, see Chart No. 1.
A is location data or reference (where indicated)

CAUTION
Submarine pipelines and cables
Charted submarine pipelines and submarine cables and submarine pipelines and cables areas are shown as follows:

POLLUTION REPORTS
Report all spills of oil and hazardous substances to the National Response Center at 1-800-424-6802 (toll free), or to the nearest U.S. Coast Guard facility if telephone communication is impossible (24 hours).

CAUTION
Shoalings amounting to as much as 6 feet have been discovered in several critical areas located in the Sound to Eustachius Inlet. It is probable that the Alaska Earthquake of July 19, 1998 caused these shoalings and others not yet discovered. Mariners are urged to use caution when navigating over or near critical shoalings.

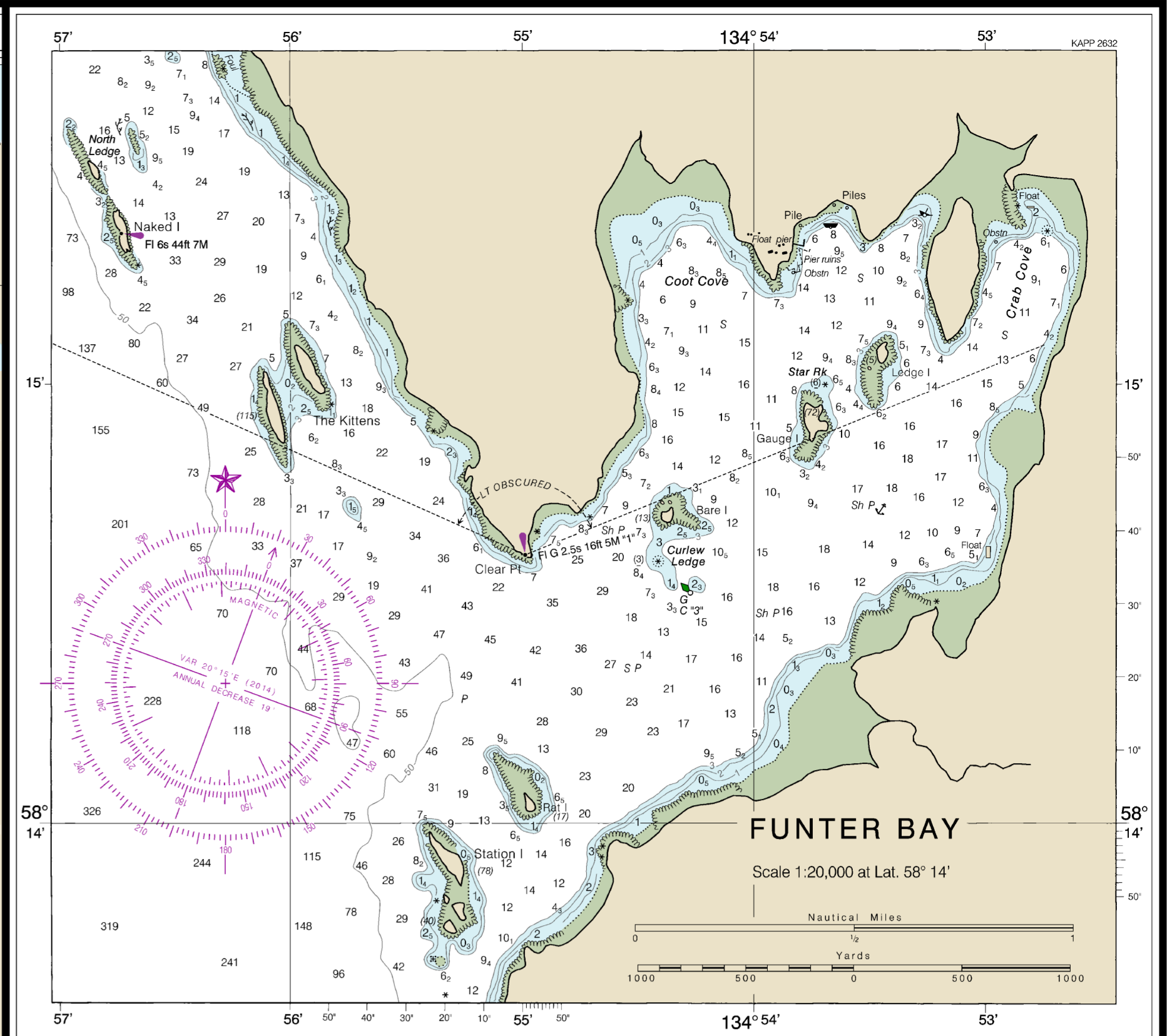
SOURCE
A 1999-2004 NCS Surveys full bottom coverage
B1 1993-1997 NCS Surveys partial bottom coverage
B2 1993-1999 NCS Surveys partial bottom coverage
B3 1993-2000 NCS Surveys partial bottom coverage

CAUTION
Limitations on the use of radio signals as aids to navigation are set forth in the U.S. Coast Guard Light Lists and National Geospatial Intelligence Agency Publication 1-117. Radio direction-finder bearings to vessels and should be used with caution. Station positions are shown thus: (A) Accurate location; (B) Approximate location.

NOTE X
Within the 12 nautical mile Territorial Sea, established by Presidential Proclamation, zone Federal laws apply. The Three Nautical Mile Line, previously identified as the outer limit of the territorial sea, is retained as a reference to depict the jurisdictional limit of the outer zone. The 12 nautical mile Territorial Sea boundary of the outer zone is the outer limit of Federal fisheries jurisdiction and the outer limit of the EEZ. The 12 nautical mile Territorial Sea and the 200 nautical mile Exclusive Economic Zone were established by Presidential Proclamation. These lines are subject to modification by treaty or the U.S. Supreme Court; these limitations are subject to modification.

NOTE C
The highest channel between Swanson Harbor and the open water of Swanson Bay is marked with depths. Tide boards at each end show lowest channel depth.

NOTE B
MONTGOMERY SOUND
Due to shoalings in this area, mariners are cautioned to proceed with care at high water with local navigation. Between July and August 2004, a dredging project is underway to mark the channel from April 15 to October 15.



UNITED STATES
ALASKA - SOUTHEAST COAST
LYNN CANAL
ICY STRAIT TO POINT SHERMAN

Mercator Projection
Scale 1:80,000 at Lat. 58° 12' N
North American Datum of 1983
(World Geodetic System 1983)

SOUNDINGS IN FATHOMS
(FATHOMS AND FEET TO ELEVEN FATHOMS)
AT MEAN LOWER LOW WATER

Additional information can be obtained at nauticalcharts.noaa.gov.

PLACE	TIDAL INFORMATION			
	DATE/TIME	New Higher	Mean	Low Water
Name: Funtler Bay	10/27/2003 14:00	101	102	103
Name: Barrow Cove	10/27/2003 14:00	103	104	105
Name: Estuary Bay	10/27/2003 14:00	104	105	106

HEIGHTS
Heights in feet above Mean High Water

AUTHORITIES
Hydrography and topography by the National Ocean Service, Coast Survey with additional data from the Corps of Engineers, U.S. Coast Guard and Canadian Hydrographic Service.

SUPPLEMENTAL INFORMATION
Consult U.S. Coast Pilot 8 for important supplemental information.

AIDS TO NAVIGATION
Consult U.S. Coast Guard Light List for supplemental information concerning aids to navigation.

CAUTION
Temporary changes in navigational aids to navigation are not indicated on this chart. See nauticalcharts.noaa.gov.

Table with 4 columns: PLACE, DATE/TIME, New Higher, Mean, Low Water. Rows include Name: Funtler Bay, Barrow Cove, Estuary Bay.

HEIGHTS
Heights in feet above Mean High Water

AUTHORITIES
Hydrography and topography by the National Ocean Service, Coast Survey with additional data from the Corps of Engineers, U.S. Coast Guard and Canadian Hydrographic Service.

SUPPLEMENTAL INFORMATION
Consult U.S. Coast Pilot 8 for important supplemental information.

AIDS TO NAVIGATION
Consult U.S. Coast Guard Light List for supplemental information concerning aids to navigation.

CAUTION
Temporary changes in navigational aids to navigation are not indicated on this chart. See nauticalcharts.noaa.gov.

NOTE B
MONTGOMERY SOUND
Due to shoalings in this area, mariners are cautioned to proceed with care at high water with local navigation. Between July and August 2004, a dredging project is underway to mark the channel from April 15 to October 15.

DEPTH	10	20	30	40	50	60	70	80	90	100	110	120	130	140	150	160	170	180	190	200	300	400	500	600	700	800	900	1000	1100	1200	1300	1400	1500	1600	1700	1800	1900	2000																																																																																							
METERS	3	7	11	15	23	27	31	39	43	51	55	63	67	75	79	87	91	99	103	111	137	146	164	182	200	218	236	254	272	290	308	326	344	362	380	398	416	434	452	470	488	506	524	542	560	578	596	614	632	650	668	686	704	722	740	758	776	794	812	830	848	866	884	902	920	938	956	974	992	1010	1028	1046	1064	1082	1100	1118	1136	1154	1172	1190	1208	1226	1244	1262	1280	1298	1316	1334	1352	1370	1388	1406	1424	1442	1460	1478	1496	1514	1532	1550	1568	1586	1604	1622	1640	1658	1676	1694	1712	1730	1748	1766	1784	1802	1820	1838	1856	1874	1892	1910	1928	1946	1964	1982	2000