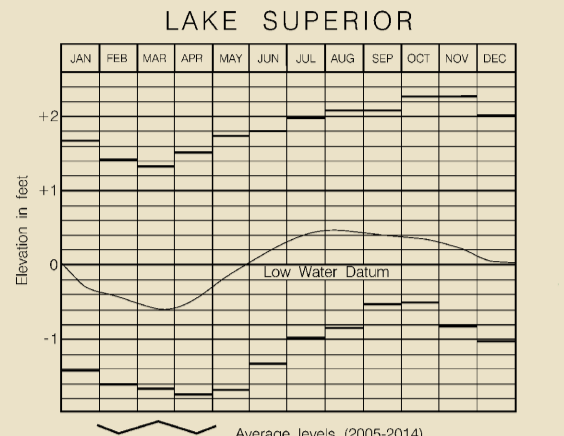


UNITED STATES - GREAT LAKES
LAKE SUPERIOR

Mercator Projection
Scale 1:600,000 at Lat. 47°30' N
North American Datum of 1983
(World Geodetic System 1984)

SOUNDINGS IN FEET IN BLUE TINT AREAS AND IN FATHOMS ELSEWHERE

Additional information can be obtained at nauticalcharts.noaa.gov.



NOTES

PLANE OF REFERENCE OF THIS CHART (Low Water Datum) is 601.1 ft. Referred to mean water level at Rimouski, Quebec, International Great Lakes Datum (IGLD) 1985.

CAUTION

Limitations on the use of radio signals as aids to marine navigation can be found in the U.S. Coast Guard Light List and National Geospatial-Intelligence Agency Publication 117.

RIGHTS AND CLEARANCES

When the water surface is above Low Water Datum, bridge and overhead clearances are reduced correspondingly. For clearances see U.S. Coast Pilot.

AUTHORITIES

Hydrography and topography by the National Ocean Service, Coast Survey, with additional data from the Corps of Engineers, Geological Survey, U.S. Coast Guard, and Canadian authorities.

HORIZONTAL DATUM

The horizontal reference datum of this chart is North American Datum of 1983 (NAD 83), which for charting purposes is considered equivalent to the World Geodetic System of 1984 (WGS 84). Geographic positions referred to the North American Datum of 1957 do not require conversion to NAD 83 for plotting on this chart.

WARNING

The prudent mariner will not rely solely on any single aid to navigation, particularly on floating aids. See U.S. Coast Guard Light List and U.S. Coast Pilot for details.

CAUTION

Temporary changes or defects in aids to navigation are not indicated on this chart. See Local Notice to Mariners.

CAUTION

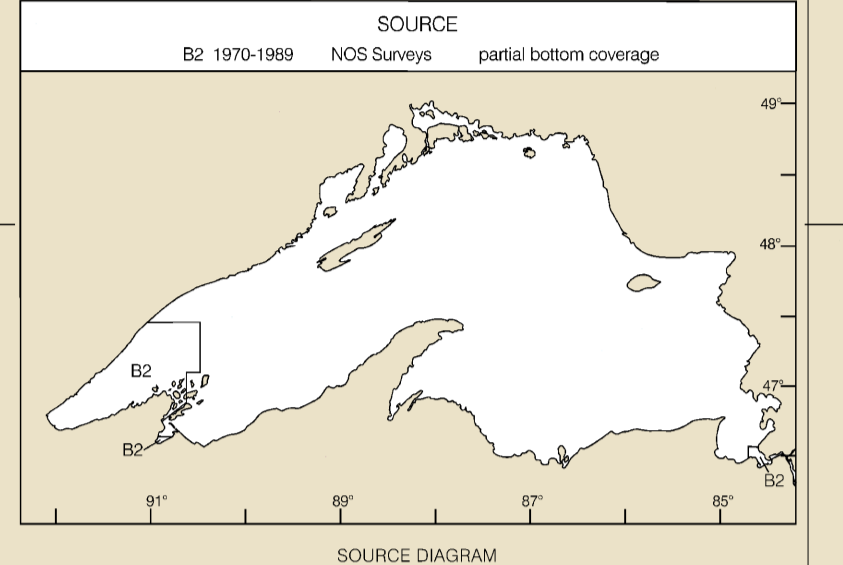
During winter months or when encumbered by ice, certain aids to navigation are replaced by other types or removed. For details see U.S. Coast Guard Light List.

SUPPLEMENTAL INFORMATION

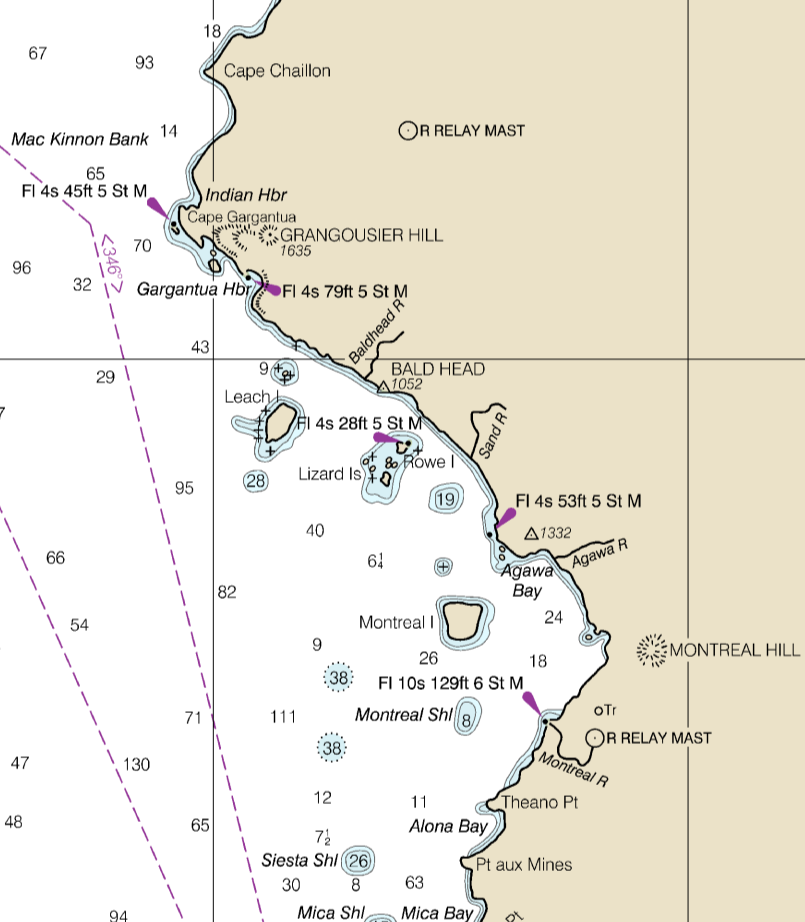
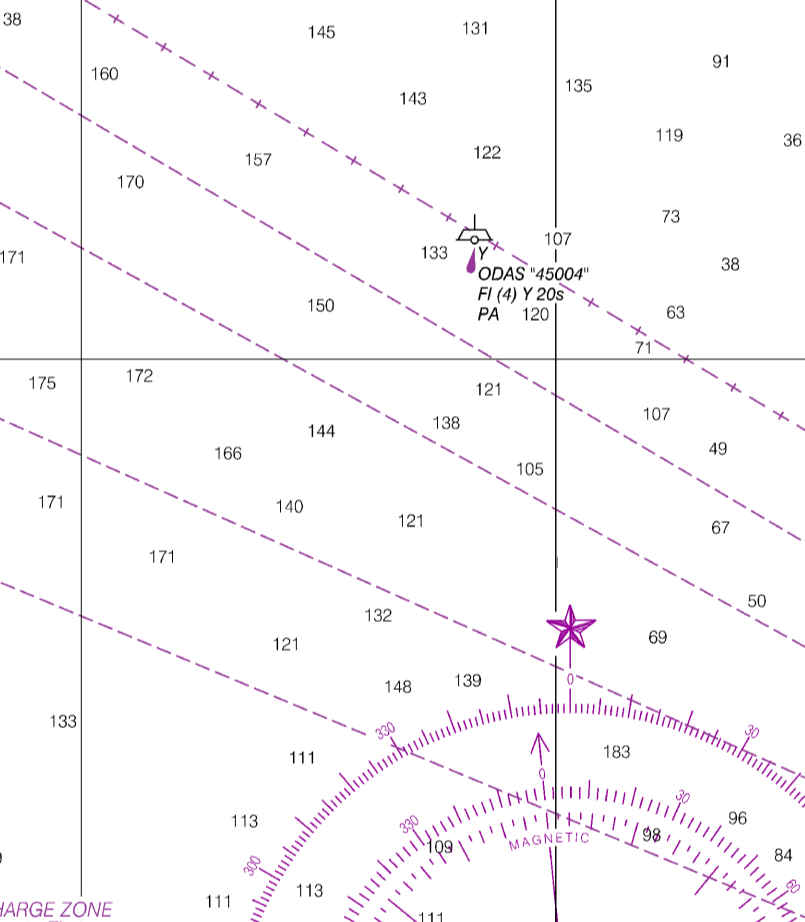
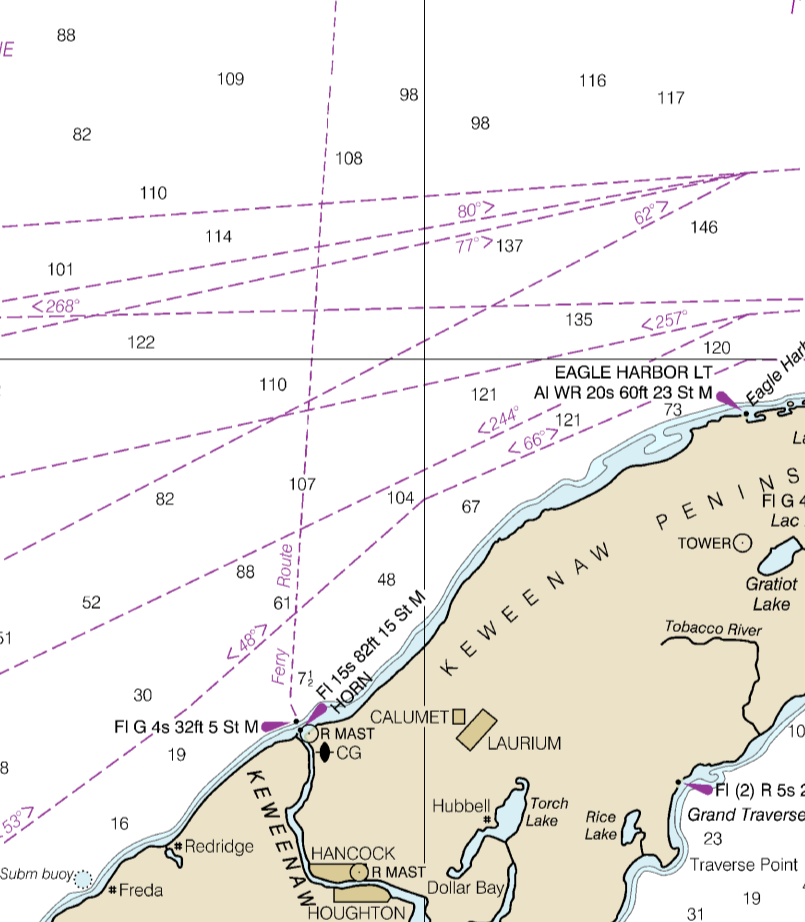
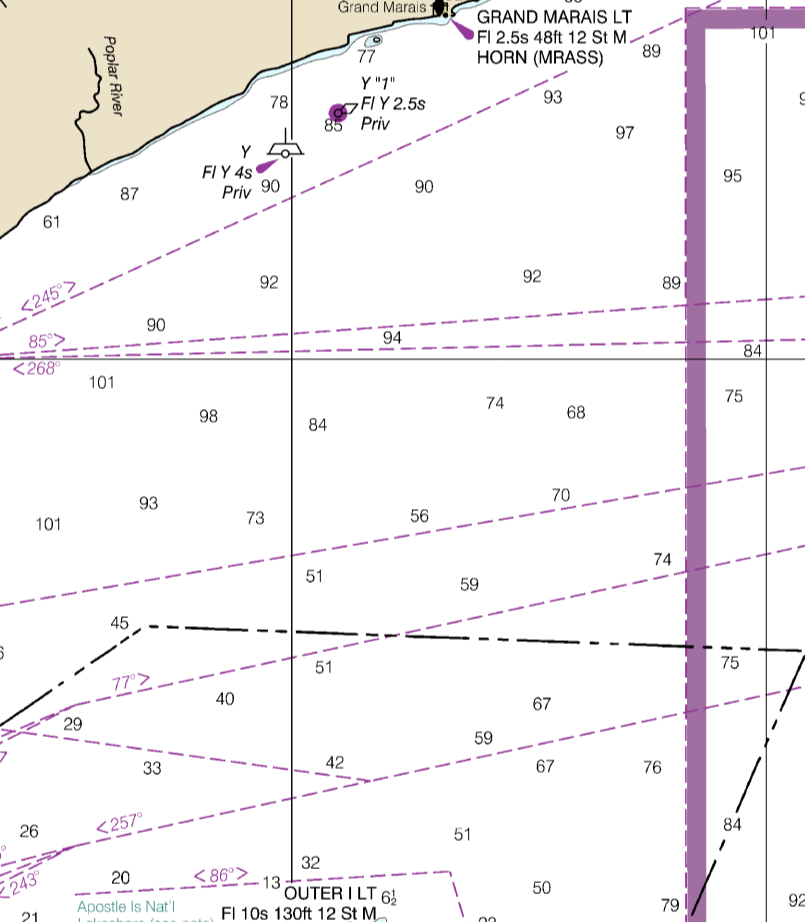
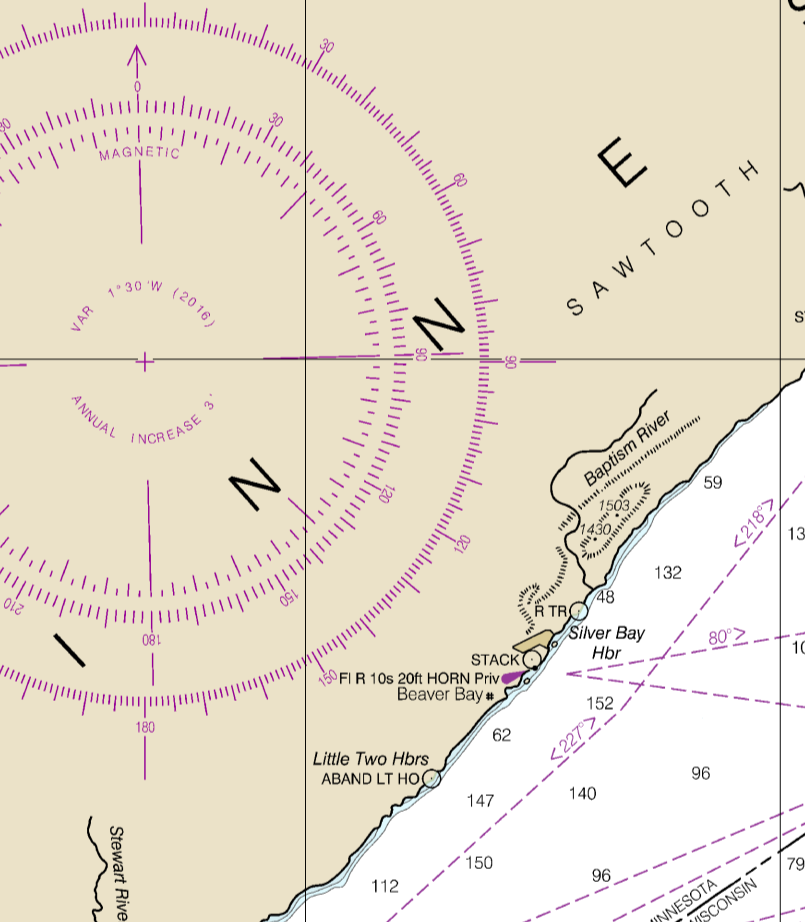
Consult U.S. Coast Pilot for important supplemental information.

COPYRIGHT

No copyright is claimed by the United States Government under Title 17, U.S.C. However, other nations may claim intellectual property rights on the compilation of data depicting the foreign waters shown on this chart.



MANUAL FOG SIGNAL
Fog signal is activated by hoisting red lights, channel 19 VHF (156.950 MHz), 5 times within 5 seconds. Horn will sound every 30 minutes.

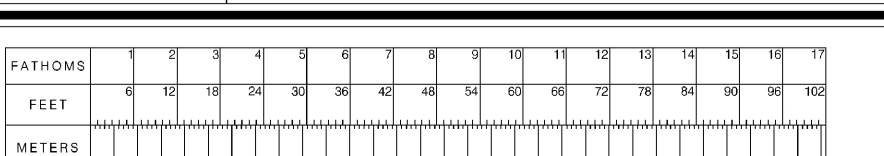


W I S C O N S I N

M I C H I G A N

SOUNDINGS IN FEET AND FATHOMS
(SOUNDINGS IN FEET IN BLUE TINT AREAS AND IN FATHOMS ELSEWHERE)

Published at Washington, D.C.
U.S. DEPARTMENT OF COMMERCE
NATIONAL OCEANIC AND ATMOSPHERIC ADMINISTRATION
NATIONAL OCEAN SERVICE
COAST SURVEY



Lake Superior
SOUNDINGS IN FEET AND FATHOMS - SCALE 1:600,000

Use ENC charts for the most up to date information. References to other charts may no longer be applicable.
13th Ed., Feb. 2018, Last Correction 3/31/2024. Cleared through:
NAM: USCG 3052004, NW: 14214802004, CHS: 3204 32052024
To ensure that this chart is printed at the proper scale, the lines should measure six inches (152 millimeters).
If the lines measure less than six inches, the lines are not printed at the proper scale.

(POD) providers fulfill a vessel's requirement to carry a navigational chart "published by the National Ocean Service" in accordance with federal regulations, including but not limited to 33 C.F.R. 164.33(a), 33 C.F.R. 164.72(b), and 46 C.F.R. 28.225(a). POD charts meet stringent print standards and can be recognized by an official certification of authenticity printed on the chart. A list of POD providers can be found at: nauticalcharts.noaa.gov/pod