

UNITED STATES - EAST COAST
CONNECTICUT - NEW YORK
LONG ISLAND SOUND
WESTERN PART

Mercator Projection
Scale 1:80,000 at Lat. 40° 57'
North American Datum of 1983
(World Geodetic System 1984)

SOUNDINGS IN FEET
AT MEAN LOWER LOW WATER

Additional information can be obtained at nauticalcharts.noaa.gov

SUPPLEMENTAL INFORMATION
Consult U.S. Coast Pilot 2 for important supplemental information.

ADDS TO NAVIGATION
Consult U.S. Coast Guard Light List for supplemental information concerning aids to navigation.

RADAR REFLECTORS
Radar reflectors have been placed on many floating aids to navigation. Individual radar reflector identification on these aids has been omitted from this chart.

CAUTION
Aids to navigation are omitted from many of the bays and coves on this chart. For navigating these areas use larger scale charts.

TEMPORARY CHANGES OR DEFECTS IN AIDS TO NAVIGATION
Temporary changes or defects in aids to navigation are not indicated on this chart. See Local Notice to Mariners.

CAUTION
During some winter months or when ice conditions exist, certain aids to navigation are replaced by other types of buoys. For details see U.S. Coast Guard Light List.

RACING BOATS
Racing boats within the limits of this chart are not shown. Information may be obtained from the U.S. Coast Guard District Office in New York or other private boaters who are not listed in the U.S. Coast Guard Light List.

SMALL CRAFT WARNINGS
During the boating season small-craft warnings will be displayed from sunrise to sunset on New York City and Dutch County Police Patrol Boats while underway in the East River and Long Island Sound.

NOAA WEATHER RADIO BROADCASTS
The NOAA Weather Radio stations listed below provide continuous weather broadcasts. The broadcast range is typically 25 to 40 miles as much as 100 miles in some areas or in other conditions.

CAUTION
Limitations on the use of radio signals as aids to marine navigation can be found in the U.S. Coast Guard Light List and National Geographic Intelligence Agency Publication 117. Radio direction-finder bearings to commercial broadcasting stations are subject to error and should be used with caution.

CAUTION
Station positions are shown thus: (A) accurate location (B) approximate location

HORIZONTAL DATUM
The horizontal reference datum of this chart is North American Datum of 1983 (NAD 83), which for drafting purposes is considered equivalent to the World Geodetic System 1984 (WGS 84). Geographic positions referred to the North American Datum of 1927 must be corrected an average of 0.80' northward and 1.10' westward to agree with this chart.

NOTE A
Navigation regulations are published in Chapter 2, U.S. Coast Pilot. Additional regulations or amendments published in the Notice to Mariners. Information concerning these regulations may be obtained at the Office of the Commander, 1st Coast Guard District in Boston, MA or at the Office of the District Engineer, Corps of Engineers in Concord, MA or New York, NY. Refer to charted regulation section numbers.

NOTE B
RECOMMENDED VESSEL ROUTE
Recommended vessel routes for deep draft vessels (including tugs and barges) transiting Western Long Island Sound and the approaches to the East River. While not mandatory, deep draft commercial vessels (including tugs and barges) are required to follow the designated route at the master's discretion. Other vessels are not included from these routes, should exercise caution in and around these areas and monitor VHF channel 16 for information concerning deep draft vessels (including tugs and barges) transiting these routes. See U.S. Coast Pilot Volume 2, Chapter 3.

NOTE C
MANAGER ACTIVATED SOUND SIGNALS
Sound signals issued with BRAVES require user activation. See USCG Light List.

NOTE D
REGULATIONS FOR OIL SPILL RESPONSE
Regulations for Oil Spill Response Sites are contained in 40 CFR, Parts 205-209. Additional information concerning the regulations and requirements for use of the sites may be obtained from the Environmental Protection Agency (EPA), See U.S. Coast Pilot appendix for addresses of EPA offices. Dumping subsequent to the survey dates may have reduced the depths shown.

NOTE E
POLLUTION REPORTS
Report all spills of oil and hazardous substances to the National Response Center (NRC), 1-800-424-8802 (24 hr), or to the nearest U.S. Coast Guard facility if response communication is impossible (24 hr). See 33 CFR 155.

NOTE F
CAUTION
Manned vessels are subject to the order of the protective riprap surrounding navigational light structures shown thus: (A)

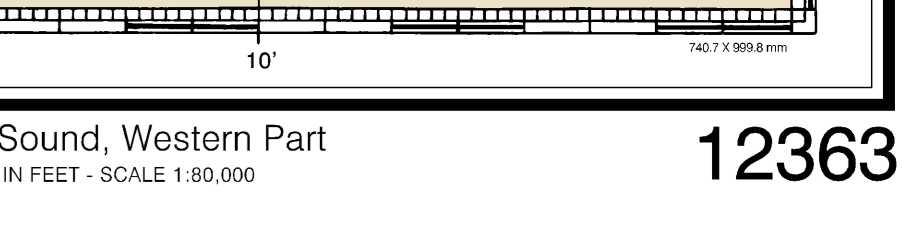
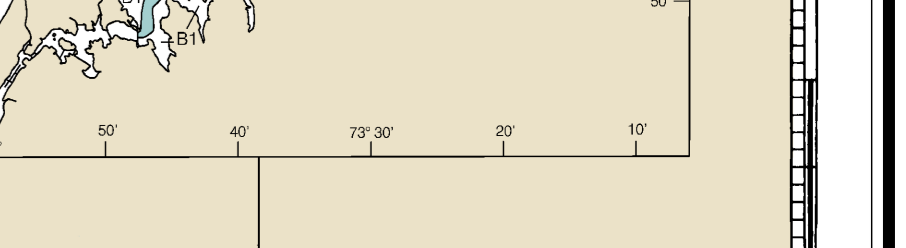
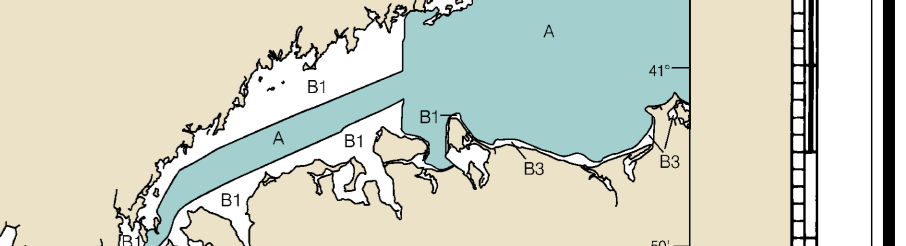
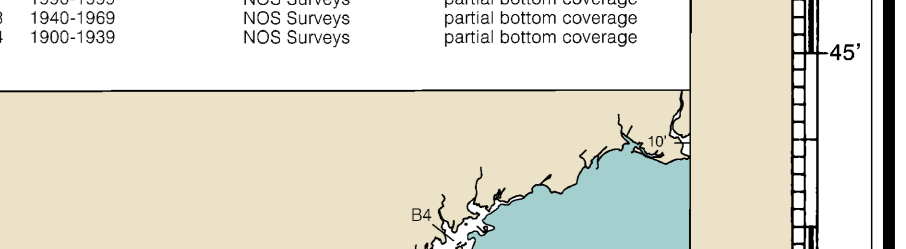
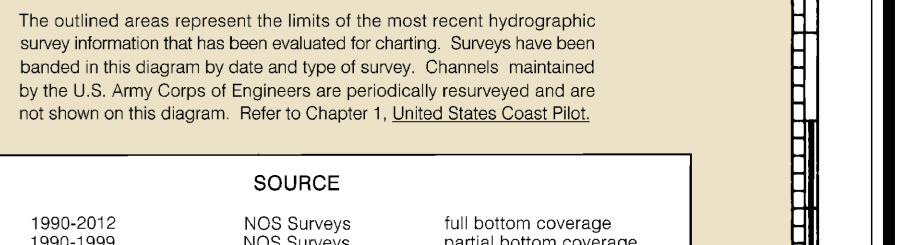
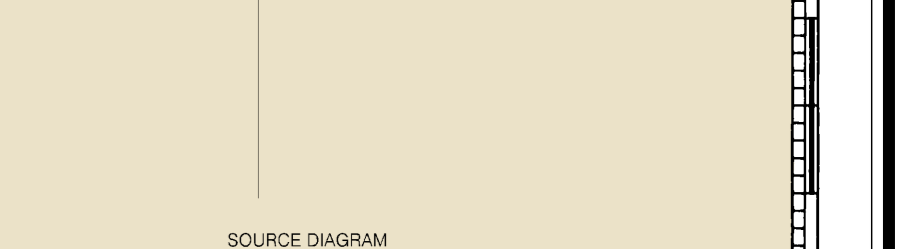
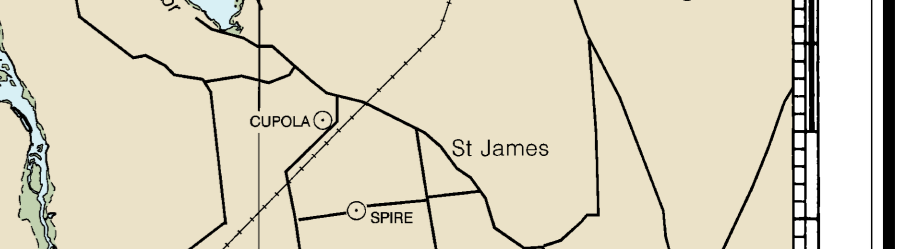
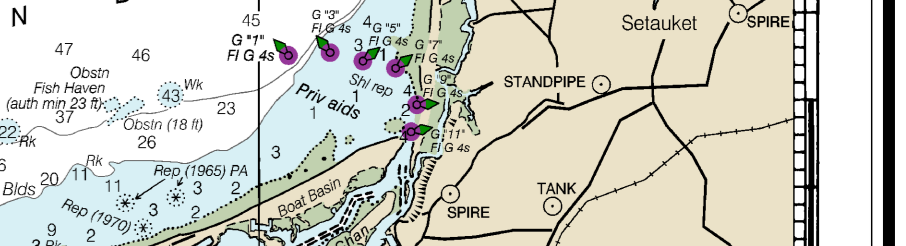
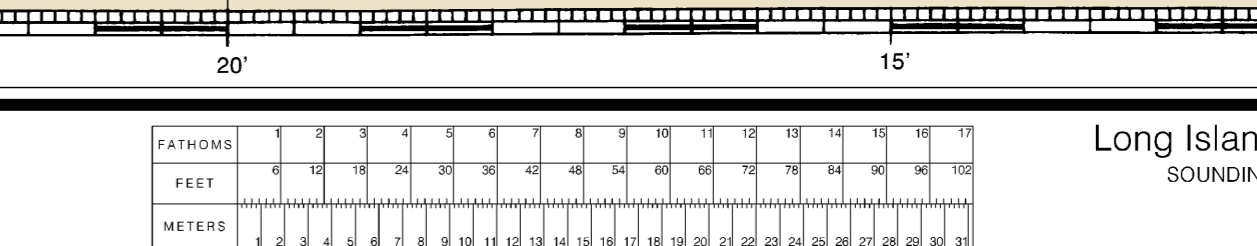
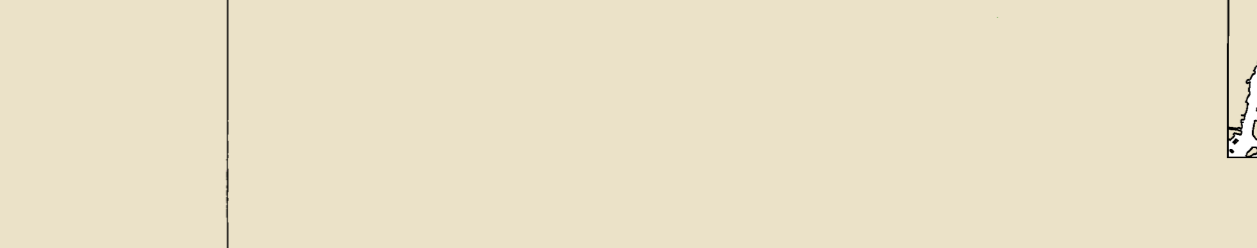
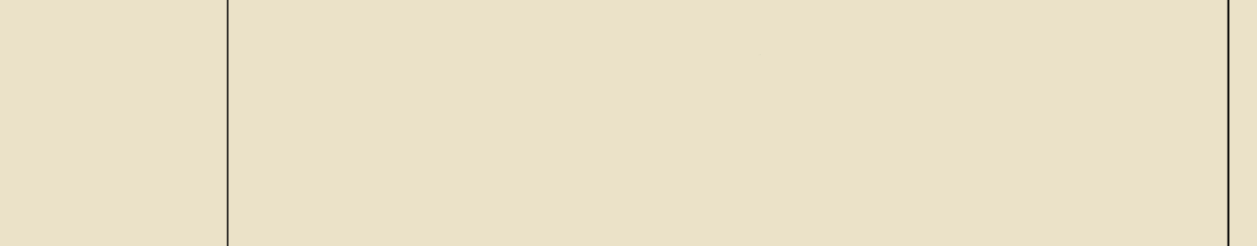
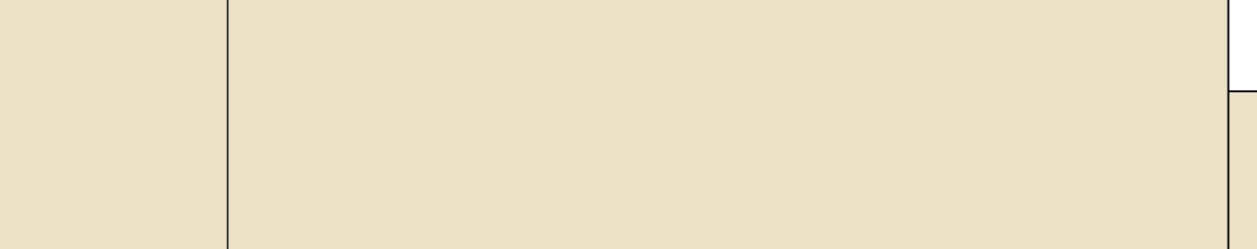
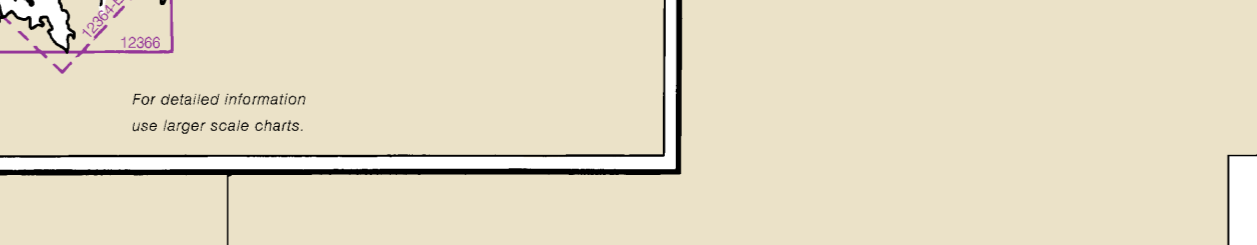
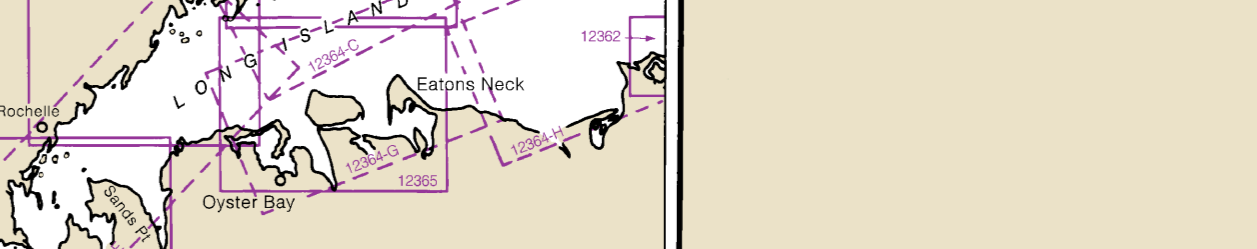
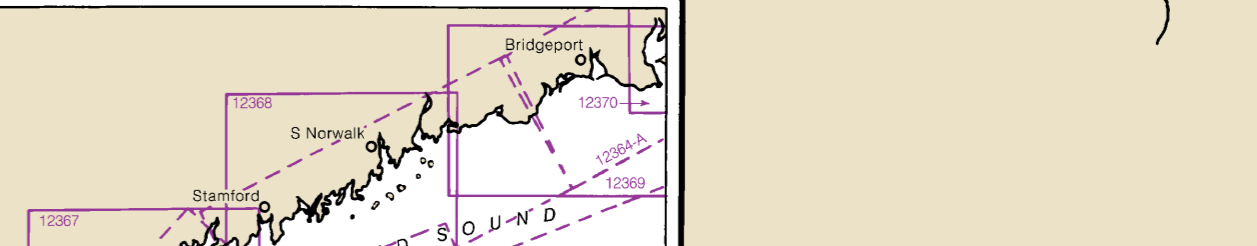
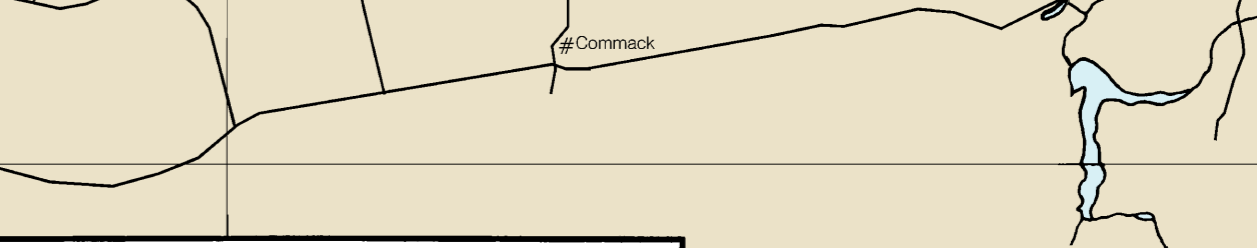
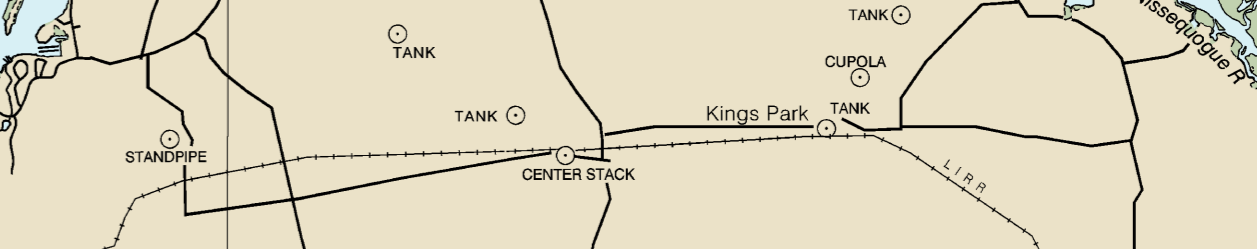
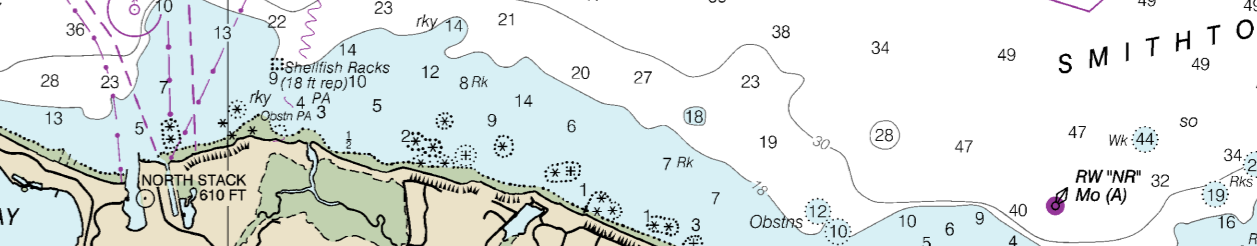
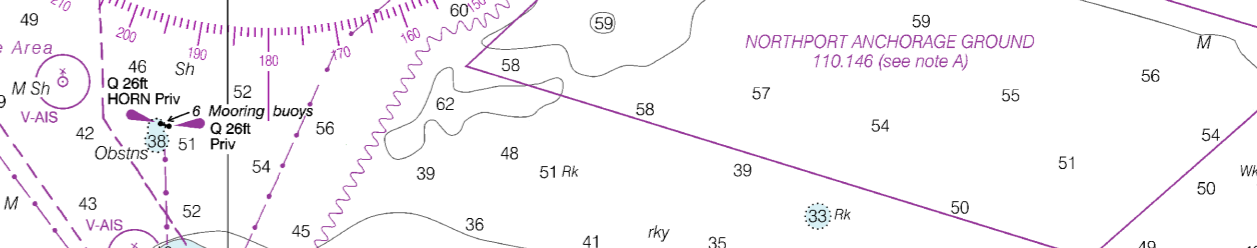
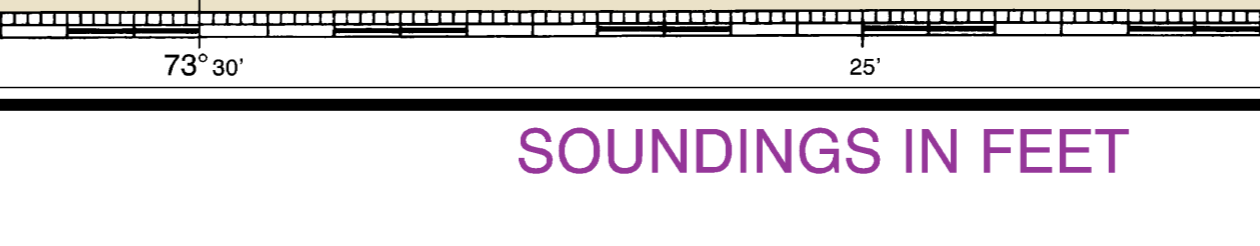
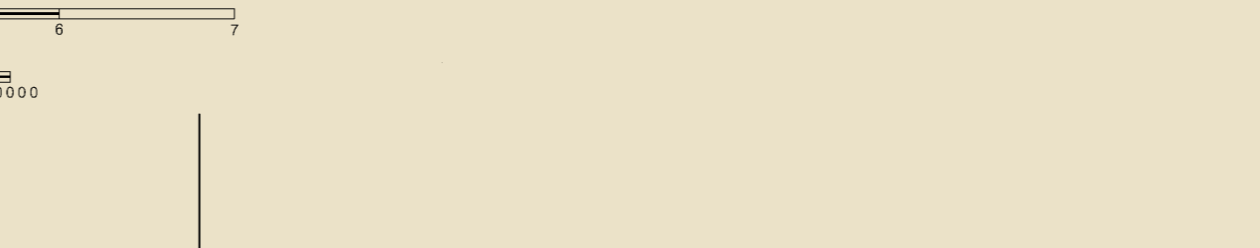
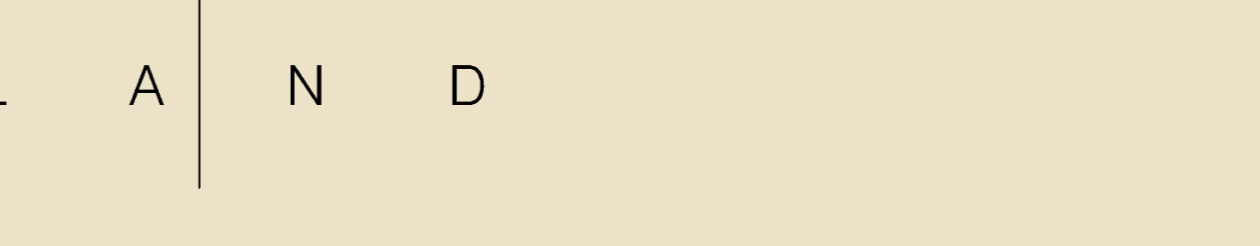
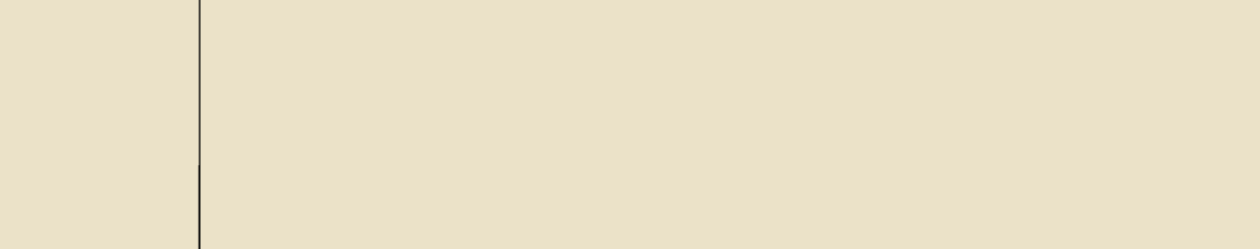
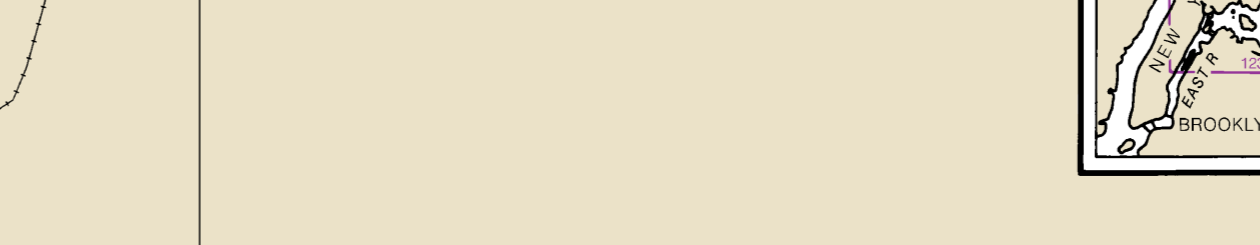
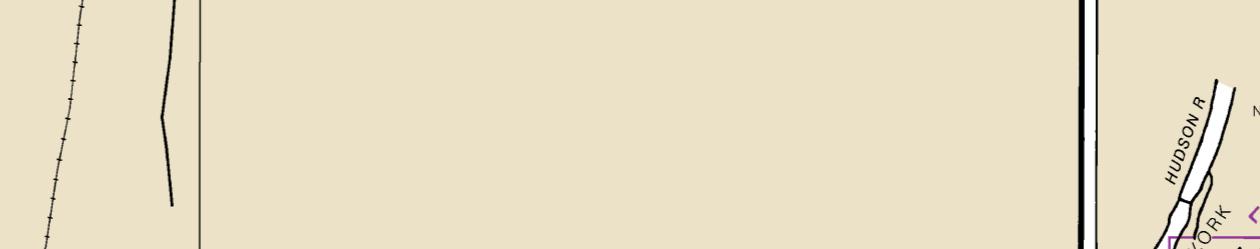
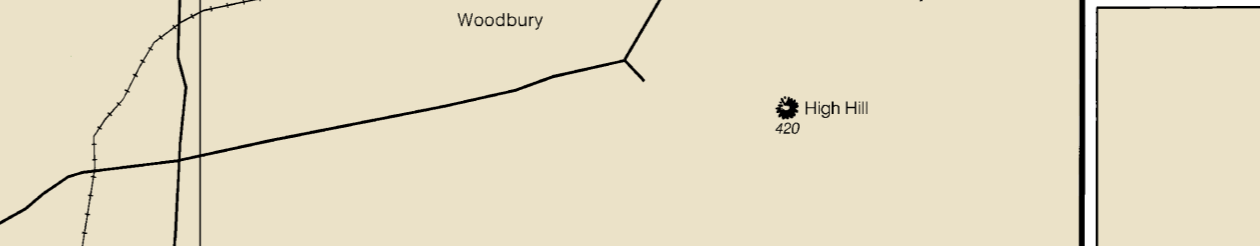
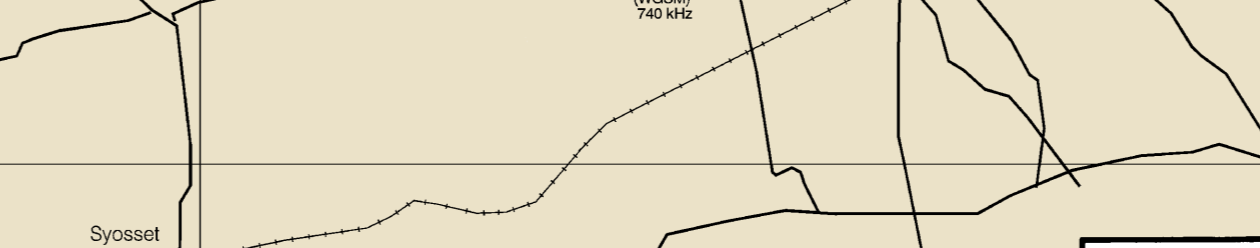
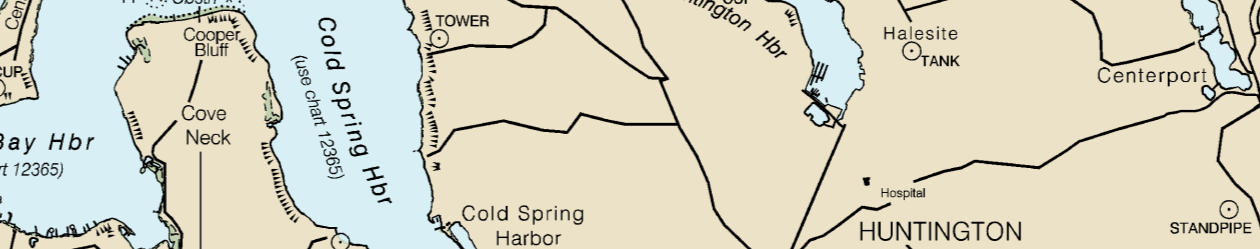
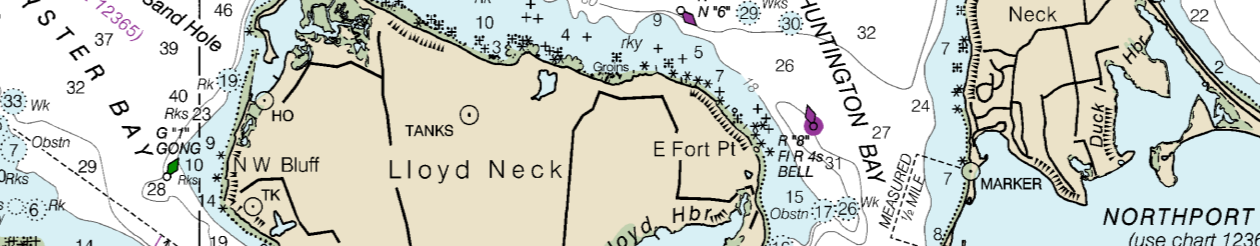
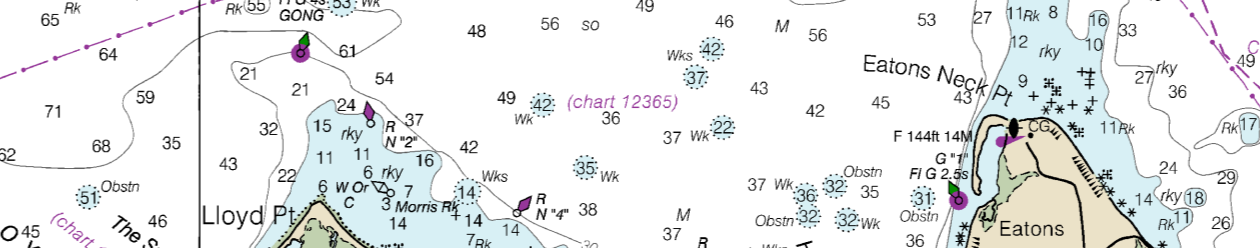
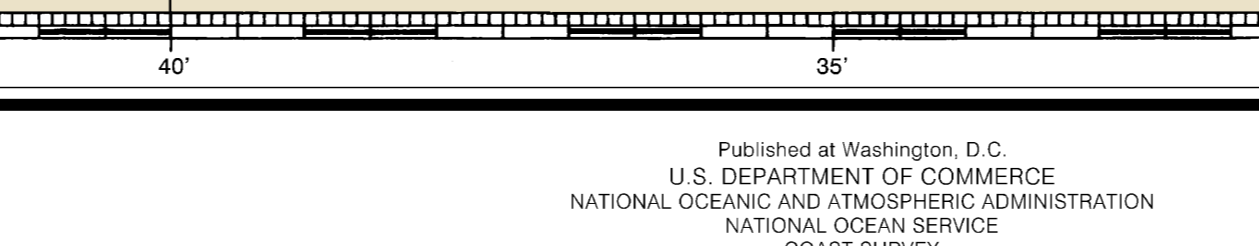
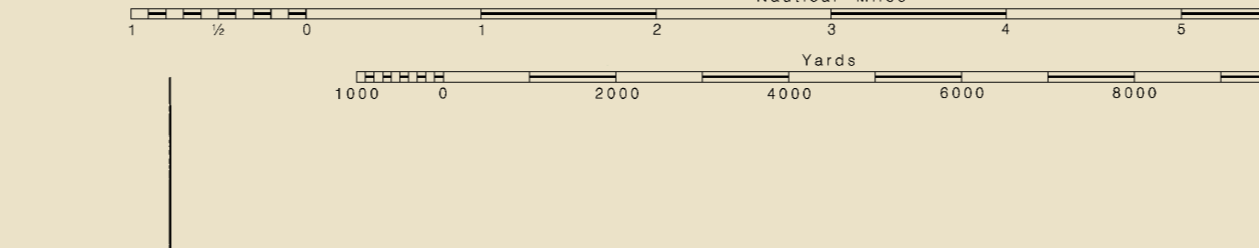
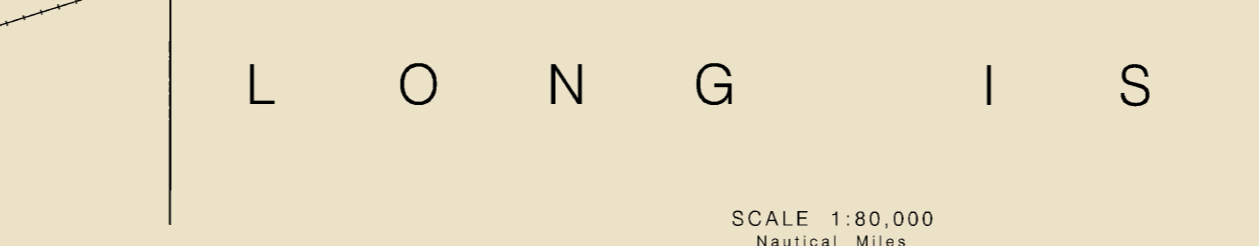
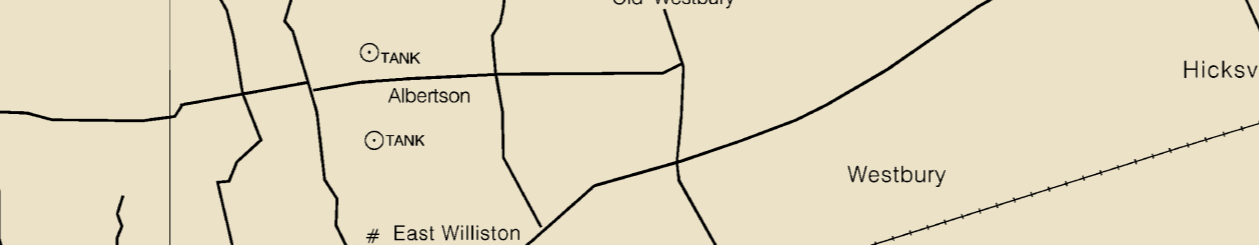
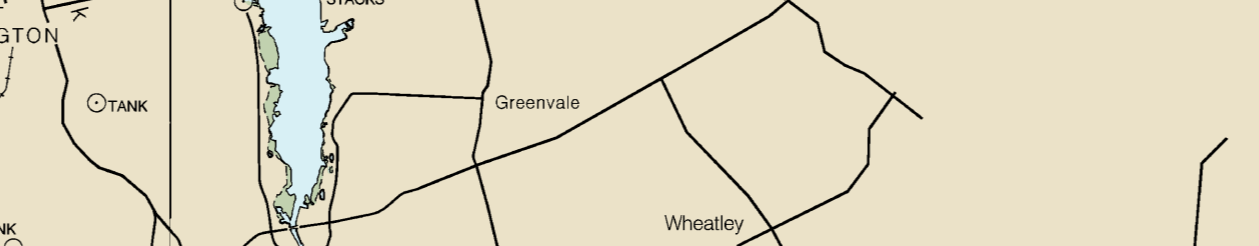
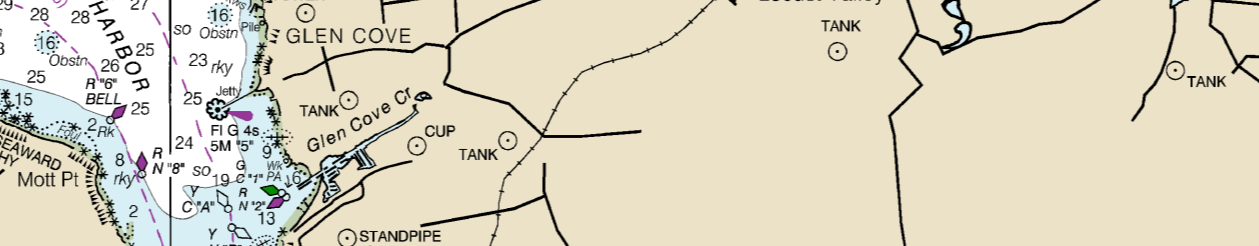
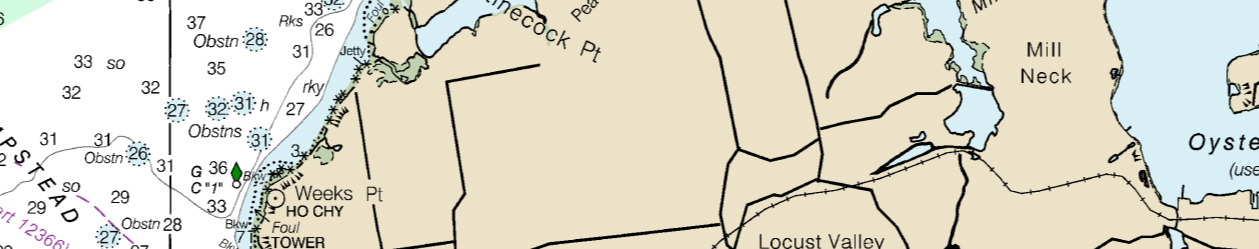
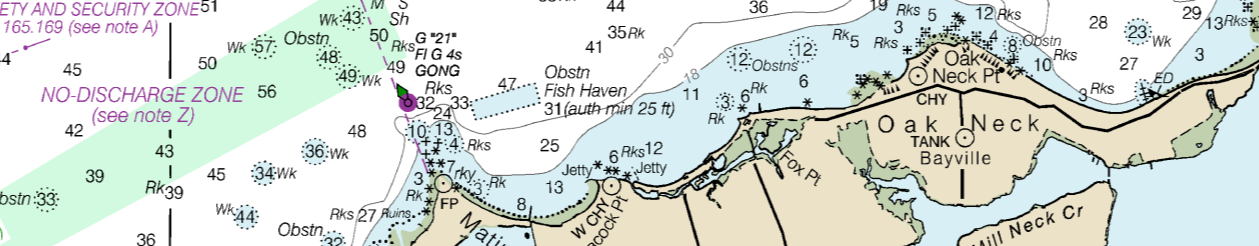
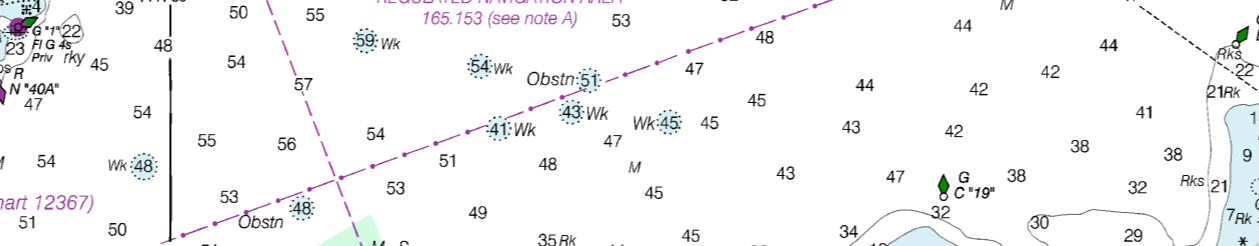
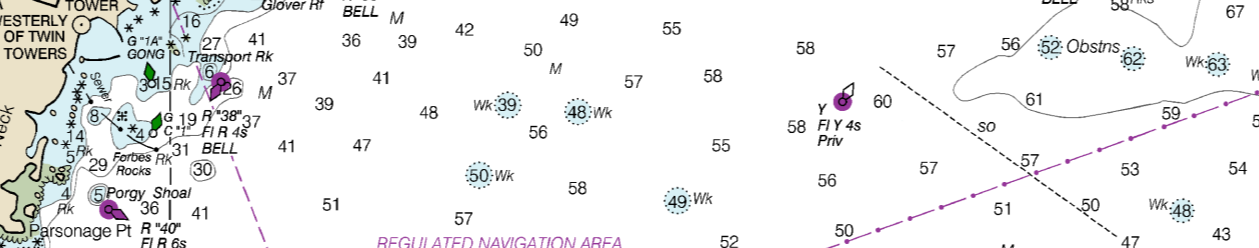
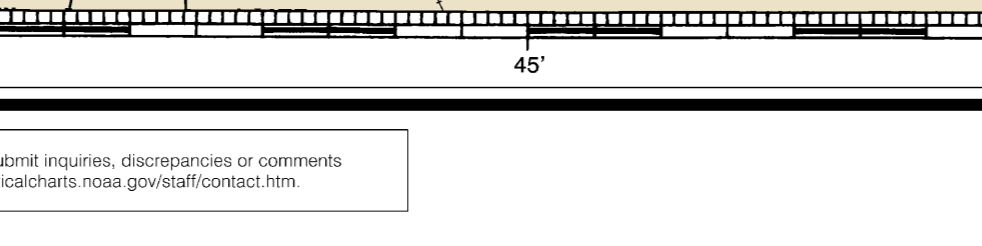
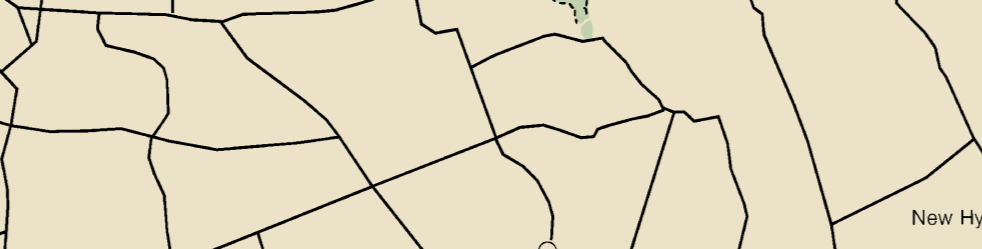
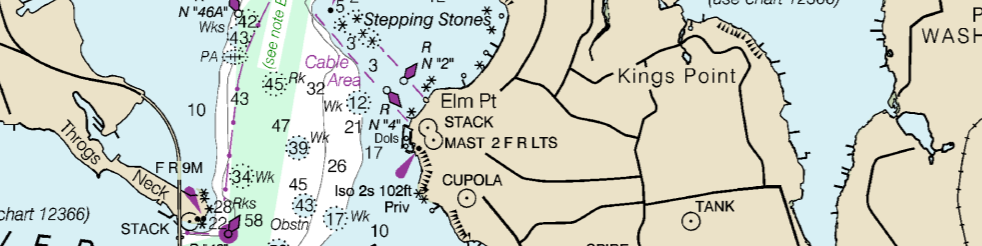
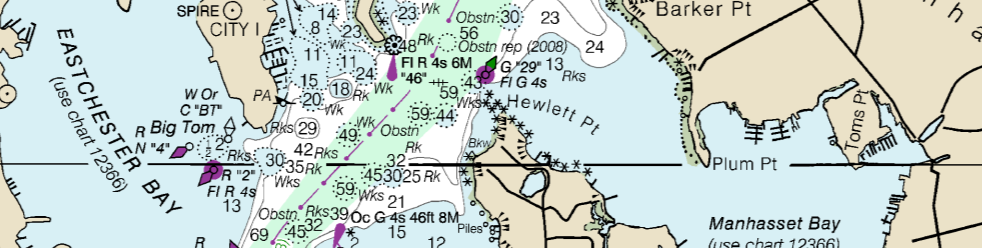
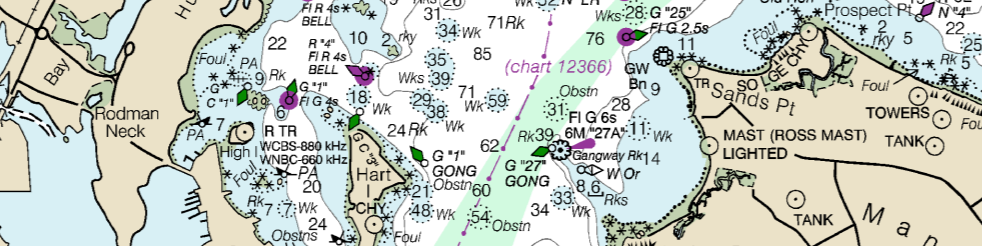
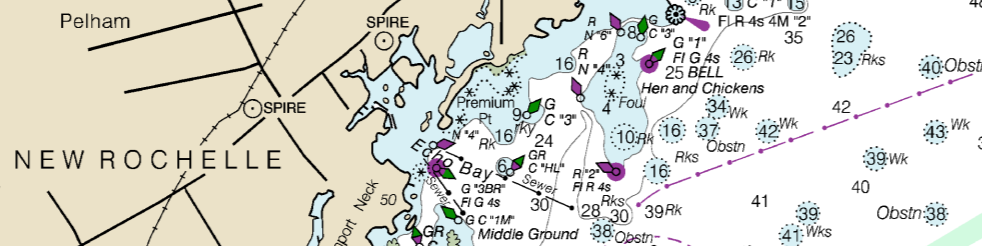
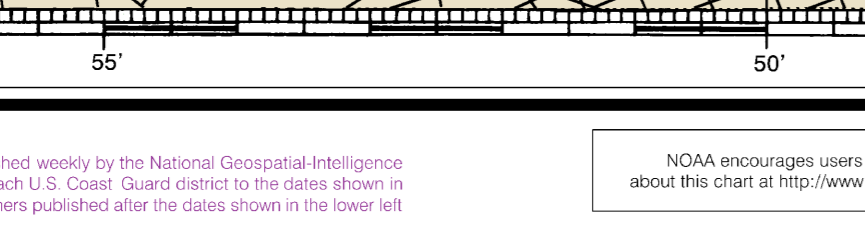
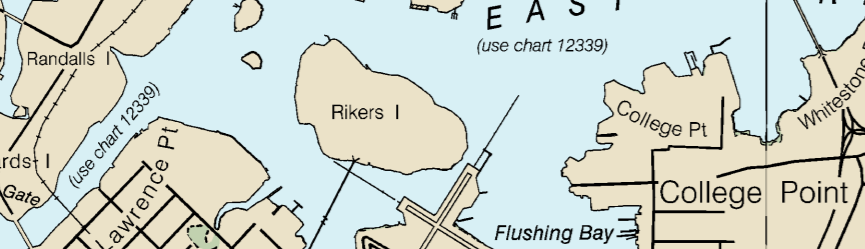
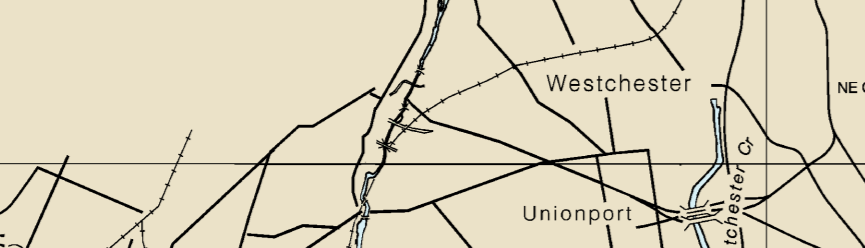
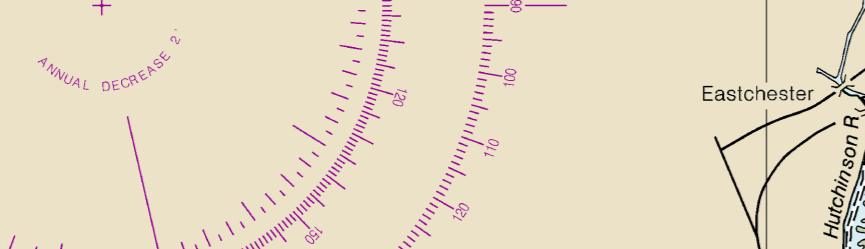
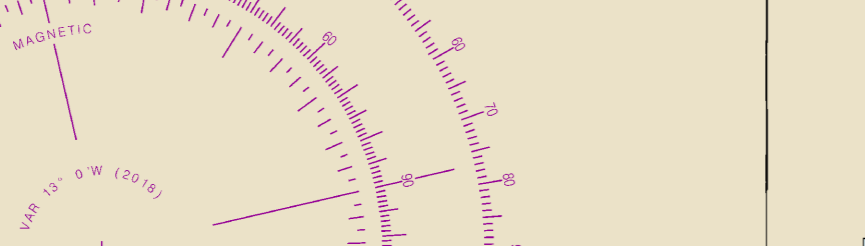
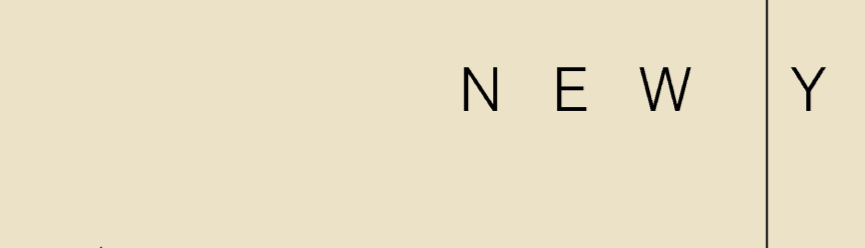
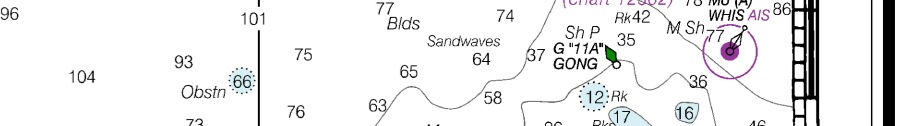
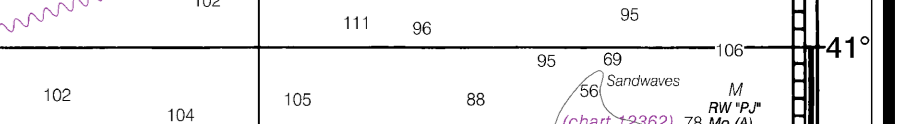
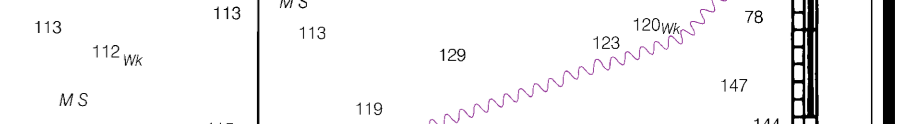
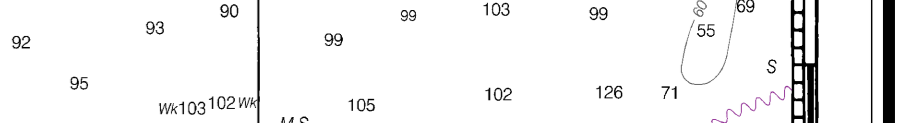
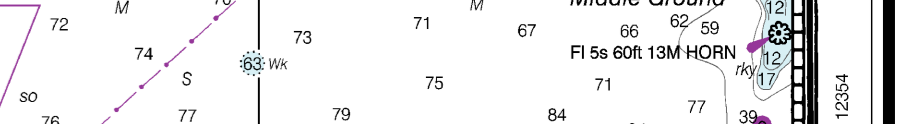
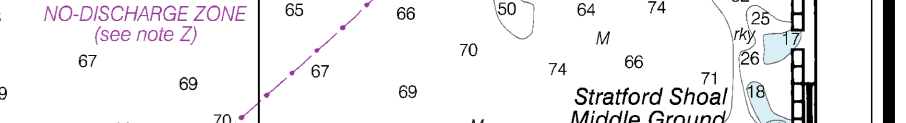
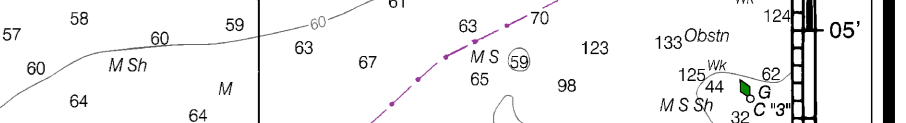
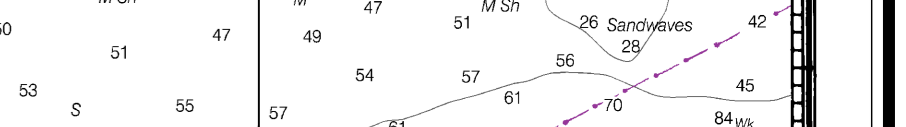
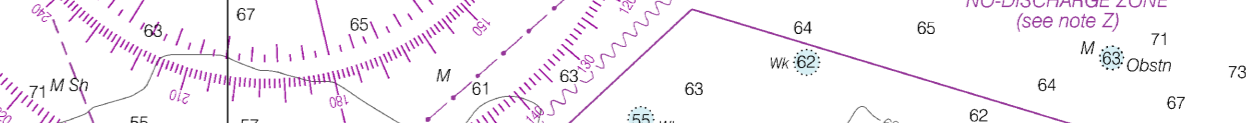
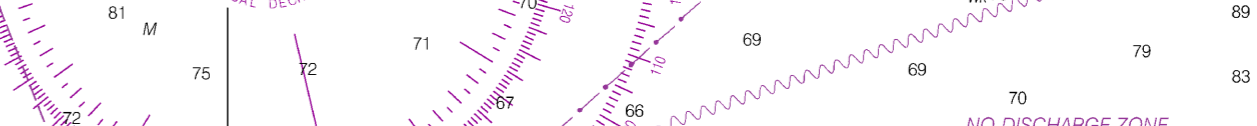
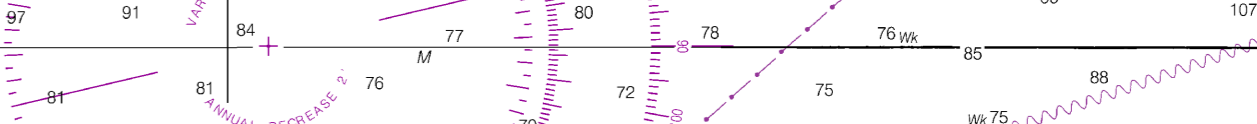
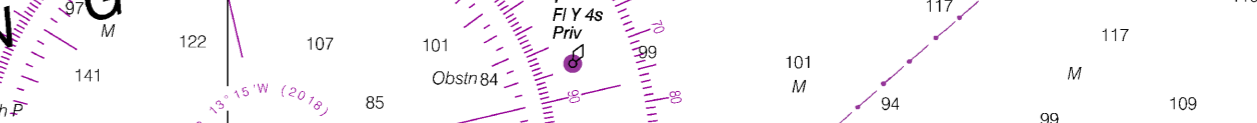
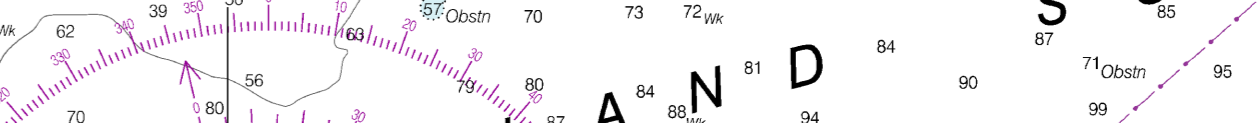
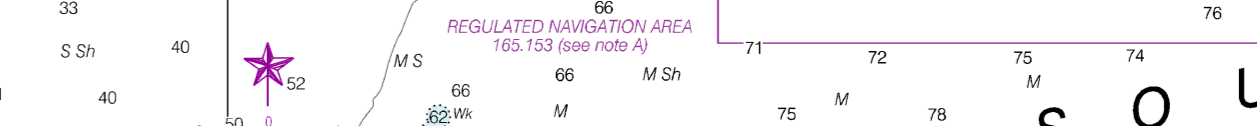
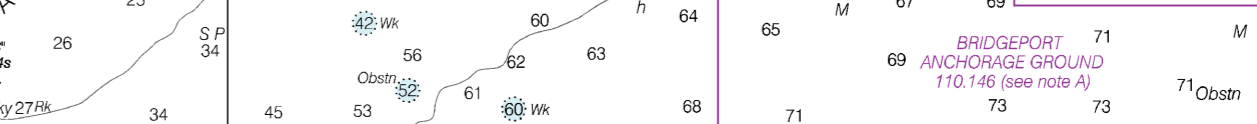
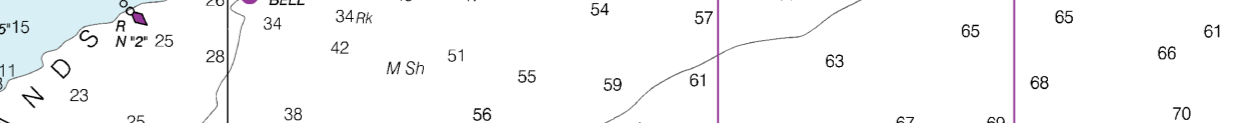
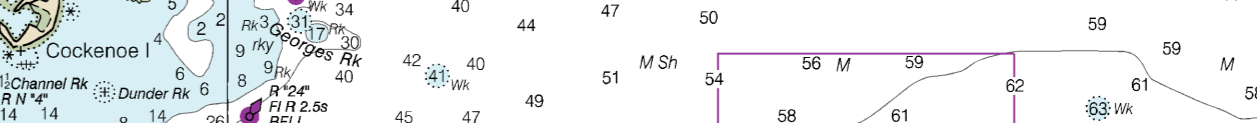
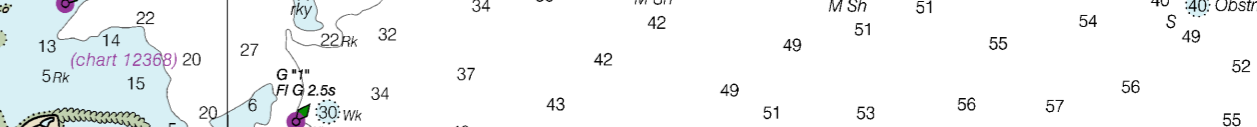
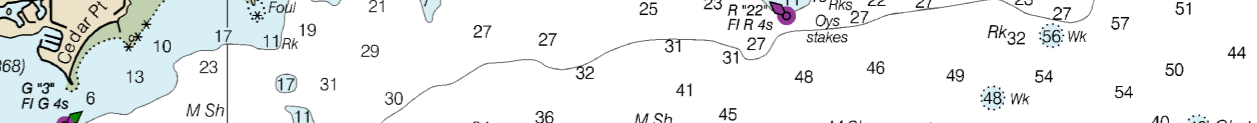
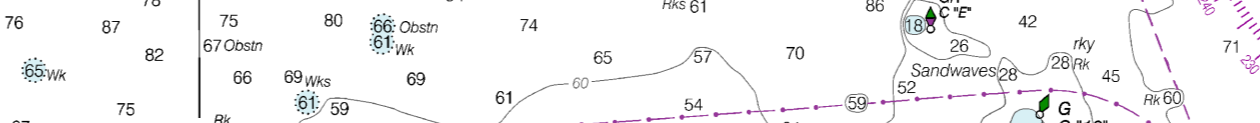
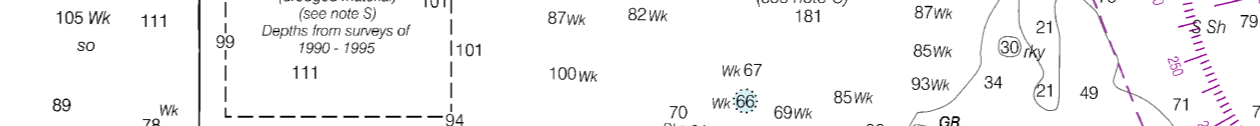
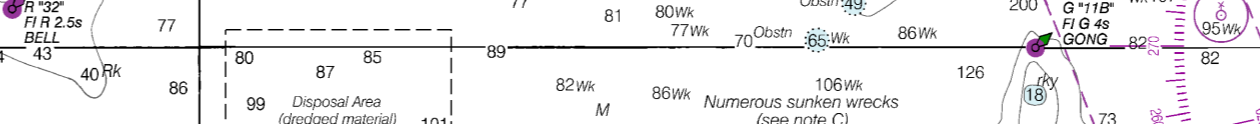
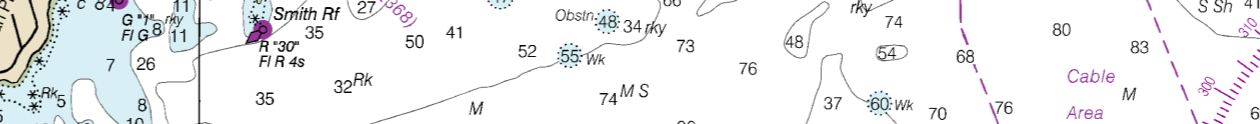
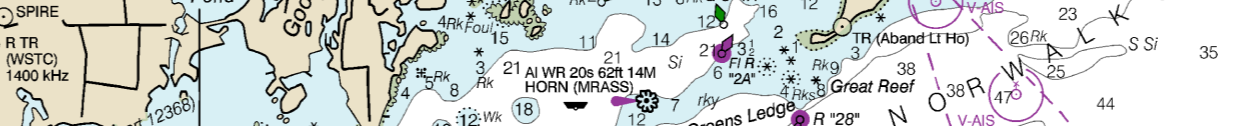
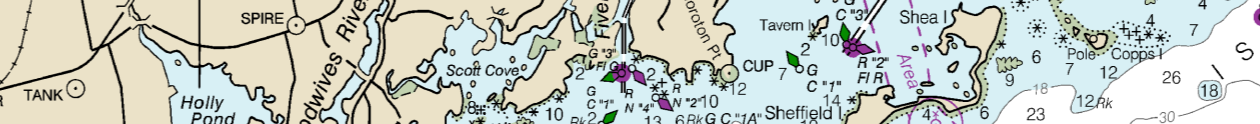
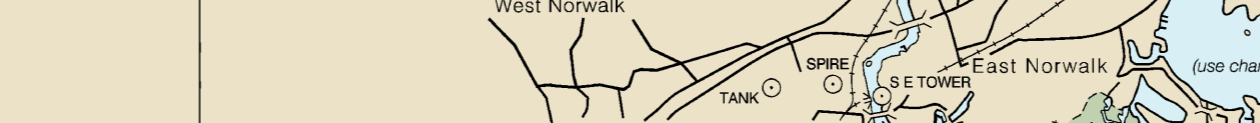
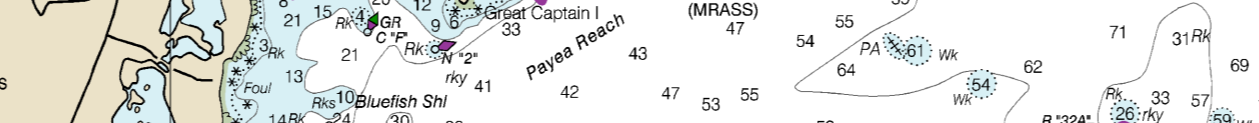
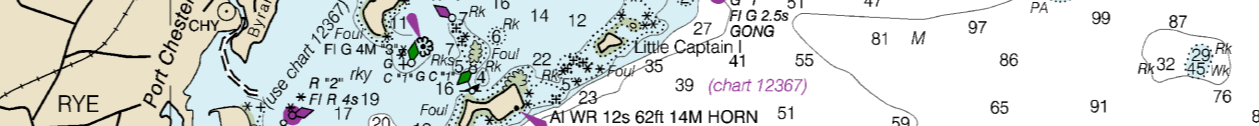
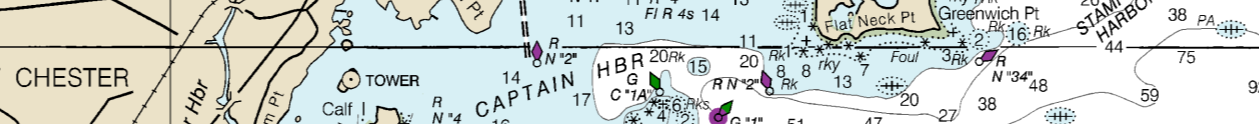
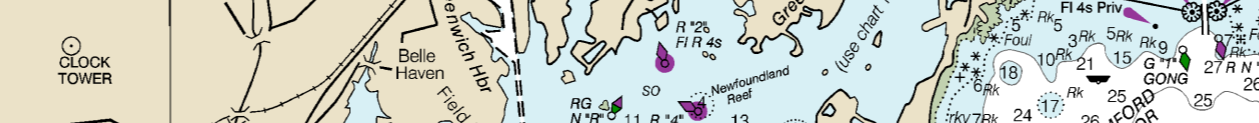
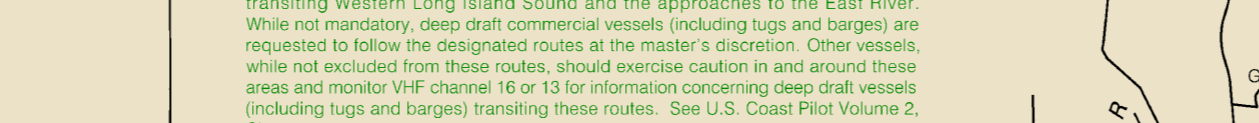
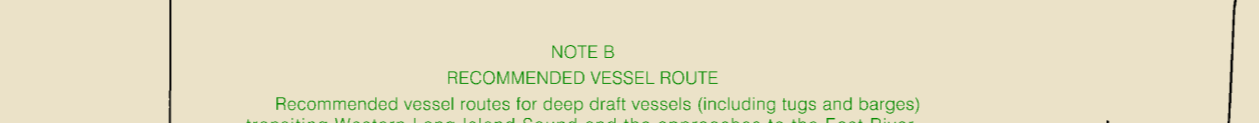
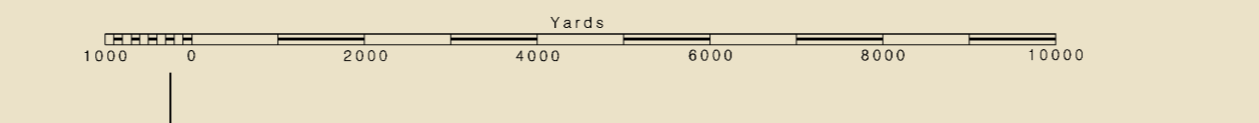
NOTE G
IMPROVED CHANNELS
Improved channels are shown by broken lines and are subject to changing, particularly at the edges.

NOTE H
NO-DISCHARGE ZONE
Under the Clean Water Act, Section 312, all vessels operating within a No-Discharge Zone (NDZ) are completely prohibited from discharging any sewage, treated or untreated, into the water. All vessels with an installed marine sanitation device (MSD) must have the MSD installed and operated for the duration of the voyage. For the NDZ are contained in the U.S. Coast Pilot. Additional information concerning the regulations and requirements may be obtained from the Environmental Protection Agency (EPA) web site: <http://www.epa.gov/vessels-marinas-and-ports>

NOTE I
SUBMERGED PIPELINES AND CABLES
Charted submarine pipelines and submarine cables and submarine pipelines and cables are shown thus: (A) (B) (C) (D) (E) (F) (G) (H) (I) (J) (K) (L) (M) (N) (O) (P) (Q) (R) (S) (T) (U) (V) (W) (X) (Y) (Z)

NOTE J
ADDITIONAL UNCHARTED SUBMERGED PIPELINES AND CABLES
Additional uncharted submarine pipelines and submarine cables may exist within the area of this chart. For submarine pipelines and submarine cables are required to be buried, and those that were regularly buried but have become exposed, the charted depth should be three fathoms. Additional information concerning the regulations and requirements may be obtained from the Environmental Protection Agency (EPA) web site: <http://www.epa.gov/vessels-marinas-and-ports>

NOTE K
CAUTION
Covered water may be marked by lighted or unlighted buoys.

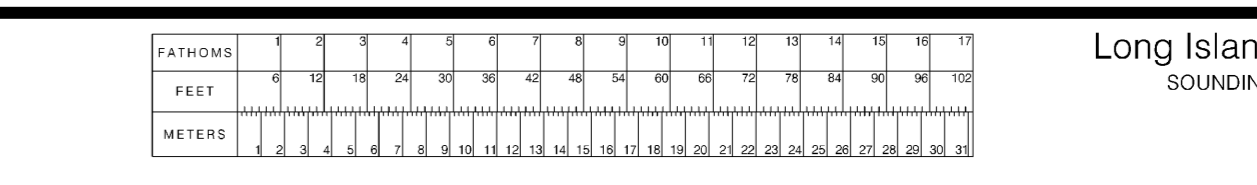


CAUTION
This chart has been corrected from the Notice to Mariners (NM) published weekly by the National Geospatial Intelligence Agency and the coordinates to the North American Datum of 1983 (NAD 83) and coordinates to the datum shown in the lower left-hand corner. Chart corrections from Notice to Mariners published after the date shown in the lower left-hand corner are available at nauticalcharts.noaa.gov

NOAA encourages users to report inaccuracies or comments about this chart at <http://www.nauticalcharts.noaa.gov/report.html>

Published at Washington, D.C.
U.S. DEPARTMENT OF COMMERCE
NATIONAL OCEANIC AND ATMOSPHERIC ADMINISTRATION
NATIONAL OCEAN SERVICE
COAST SURVEY

SOUNDINGS IN FEET



Long Island Sound, Western Part
SOUNDINGS IN FEET - SCALE 1:80,000