

NEW JERSEY SANDY HOOK TO LITTLE EGG HARBOR

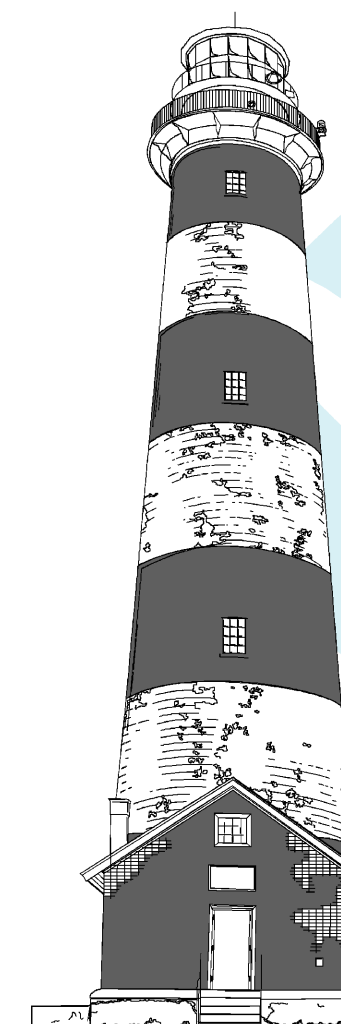
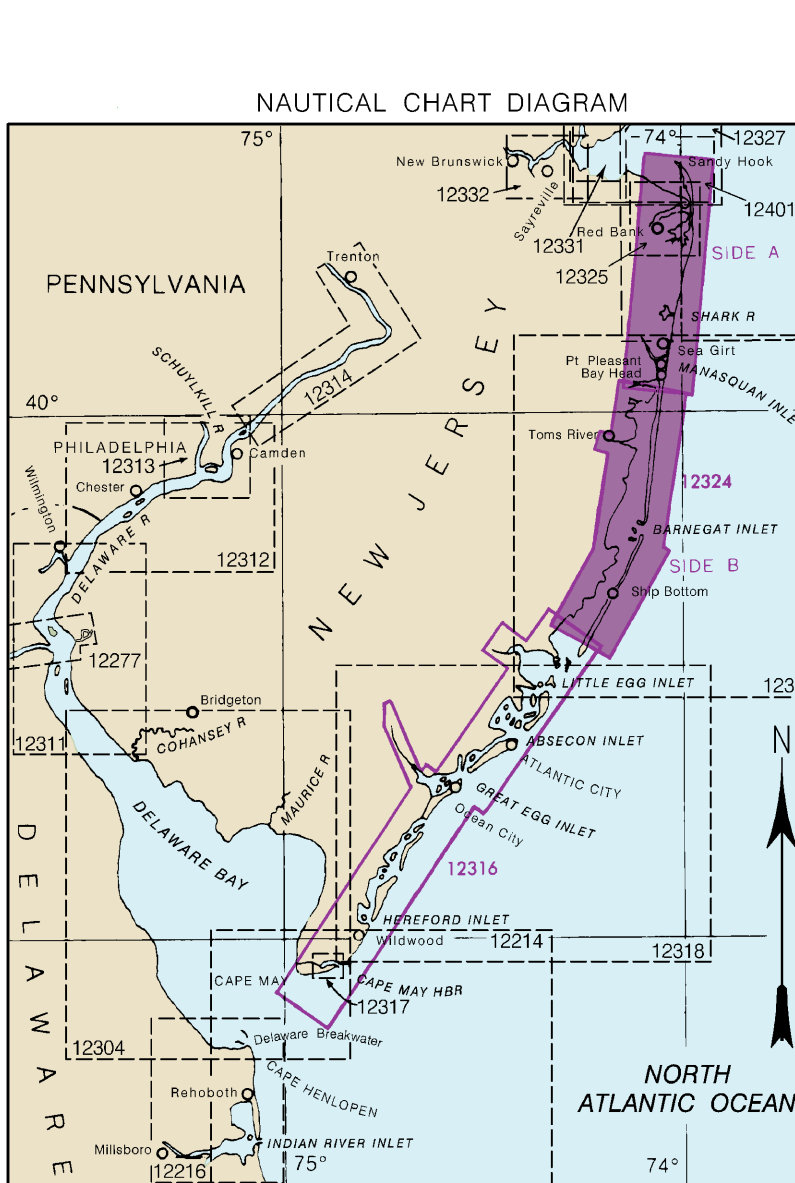


Chart 12324  
Published by Hydrographic Office,  
U.S. DEPARTMENT OF COMMERCE,  
NATIONAL OCEANIC AND ATMOSPHERIC ADMINISTRATION,  
NATIONAL COAST GUARD SERVICE

SOUNDINGS IN FEET  
AT LOW-TIDE STAGES UNLESS OTHERWISE NOTED  
HEIGHTS IN FEET  
UNLESS OTHERWISE NOTED  
ADDITIONAL INFORMATION CAN BE OBTAINED AT [www.nmfs.gov](http://www.nmfs.gov)



**ANCHORAGE AREAS**  
1:10,000 Scale Symbols  
Limits and designations of anchorage areas are shown in purple.

**GENERAL ANCHORAGES**  
For vessels carrying explosives

**NAVAL ANCHORAGES**  
For vessels carrying explosives

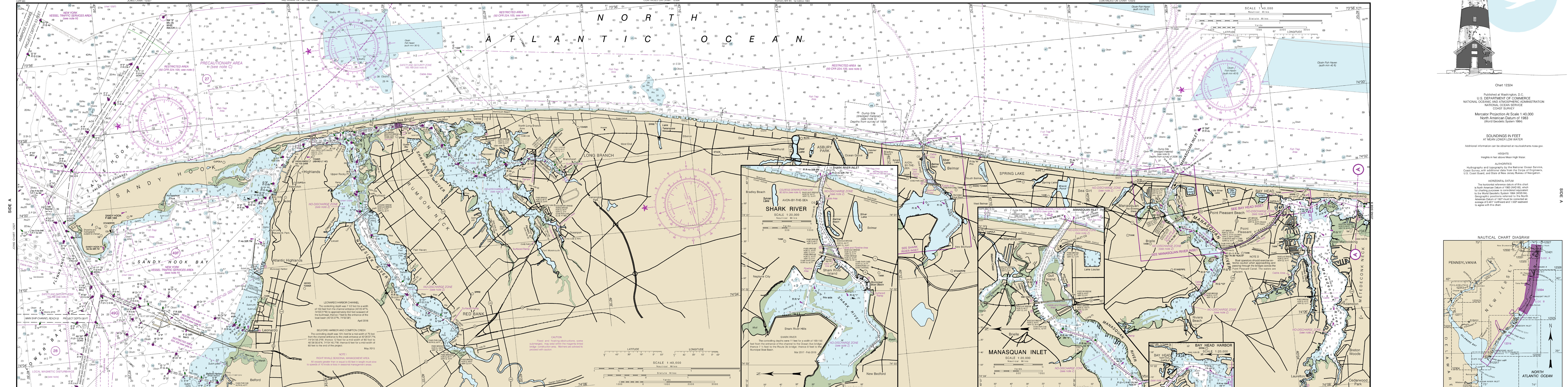
**REVISIONS**  
1. 1/2010  
2. 1/2011  
3. 1/2012  
4. 1/2013  
5. 1/2014  
6. 1/2015  
7. 1/2016  
8. 1/2017  
9. 1/2018  
10. 1/2019  
11. 1/2020  
12. 1/2021

**REVISIONS BY DATE**

NO.	DATE	DESCRIPTION
1	1/2010	Initial Issue
2	1/2011	Update of soundings
3	1/2012	Update of soundings
4	1/2013	Update of soundings
5	1/2014	Update of soundings
6	1/2015	Update of soundings
7	1/2016	Update of soundings
8	1/2017	Update of soundings
9	1/2018	Update of soundings
10	1/2019	Update of soundings
11	1/2020	Update of soundings
12	1/2021	Update of soundings

**NOTES**  
1. This chart is a reproduction of the original chart published by the Hydrographic Office, U.S. Coast and Geodetic Survey, and is published under the authority of the U.S. Coast and Geodetic Survey. It is not to be used for navigation unless it is accompanied by the original chart or a copy of the original chart.

**NOTES**  
1. This chart is a reproduction of the original chart published by the Hydrographic Office, U.S. Coast and Geodetic Survey, and is published under the authority of the U.S. Coast and Geodetic Survey. It is not to be used for navigation unless it is accompanied by the original chart or a copy of the original chart.



**NOTE 1**  
This chart is a reproduction of the original chart published by the Hydrographic Office, U.S. Coast and Geodetic Survey, and is published under the authority of the U.S. Coast and Geodetic Survey. It is not to be used for navigation unless it is accompanied by the original chart or a copy of the original chart.

**NOTE 2**  
This chart is a reproduction of the original chart published by the Hydrographic Office, U.S. Coast and Geodetic Survey, and is published under the authority of the U.S. Coast and Geodetic Survey. It is not to be used for navigation unless it is accompanied by the original chart or a copy of the original chart.

**NOTE 3**  
This chart is a reproduction of the original chart published by the Hydrographic Office, U.S. Coast and Geodetic Survey, and is published under the authority of the U.S. Coast and Geodetic Survey. It is not to be used for navigation unless it is accompanied by the original chart or a copy of the original chart.

**NOTE 4**  
This chart is a reproduction of the original chart published by the Hydrographic Office, U.S. Coast and Geodetic Survey, and is published under the authority of the U.S. Coast and Geodetic Survey. It is not to be used for navigation unless it is accompanied by the original chart or a copy of the original chart.

**NOTE 5**  
This chart is a reproduction of the original chart published by the Hydrographic Office, U.S. Coast and Geodetic Survey, and is published under the authority of the U.S. Coast and Geodetic Survey. It is not to be used for navigation unless it is accompanied by the original chart or a copy of the original chart.

