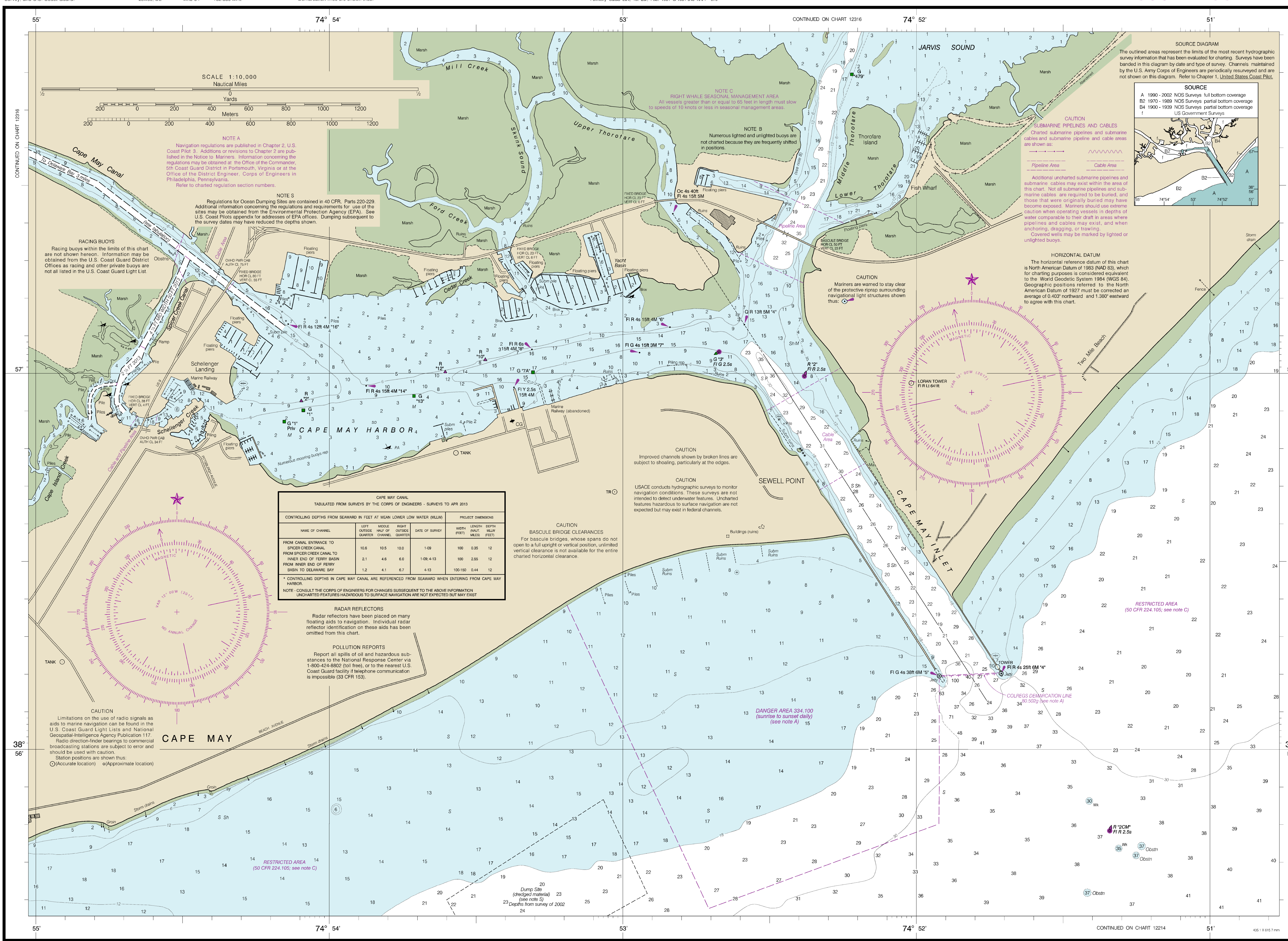


# NEW JERSEY CAPE MAY HARBOR

Mercator Projection  
Scale 1:10,000 at Lat. 38° 57'  
North American Datum of 1983  
(World Geodetic System of 1984)  
SOUNDINGS IN FEET  
AT MEAN LOWER LOW WATER  
Additional information can be obtained at nauticalcharts.noaa.gov.

NAME	PLACE	TIDAL INFORMATION	Height referred to datum of soundings (MLLW)		
			Mean Higher High Water	Mean High Water	Mean Low Water
Cape May Harbor, New Jersey	(38°57'N/74°53'W)		4.9	4.6	0.2

WARNING The prudent mariner will not rely solely on any single aid to navigation, particularly on floating aids. See U.S. Coast Guard Light List and U.S. Coast Pilot for details.  
AIDS TO NAVIGATION Consult U.S. Coast Guard Light List for supplemental information concerning aids to navigation.



CONTROLLING DEPTHS FROM SEAWARD IN FEET AT MEAN LOWER LOW WATER (MLLW)				PROJECT DIMENSIONS	
NAME OF CHANNEL	LEFT QUARTER	MIDDLE HALF	RIGHT QUARTER	WIDTH (FEET)	LENGTH (MILES)
FROM CANAL ENTRANCE TO SPICER CREEK CANAL	10.6	10.5	10.0	1.09	100
FROM SPICER CREEK CANAL TO INNER END OF FERRY BASIN	2.1	4.6	6.0	1.09-4.13	100
FROM INNER END OF FERRY BASIN TO DELAWARE BAY	1.2	4.1	6.7	4-13	100-150

\* CONTROLLING DEPTHS IN CAPE MAY CANAL ARE REFERENCED FROM SEAWARD WHEN ENTERING FROM CAPE MAY HARBOR.  
NOTE - CONSULT THE CORPS OF ENGINEERS FOR CHANGES SUBSEQUENT TO THE ABOVE INFORMATION. UNCHARTED FEATURES HAZARDOUS TO SURFACE NAVIGATION ARE NOT EXPECTED BUT MAY EXIST.

**RADAR REFLECTORS**  
Radar reflectors have been placed on many floating aids to navigation. Individual radar reflector identification on these aids has been omitted from this chart.

**POLLUTION REPORTS**  
Report all spills of oil and hazardous substances to the National Response Center via 1-800-424-8802 (toll free), or to the nearest U.S. Coast Guard facility if telephone communication is impossible (33 CFR 153).

This is the Last Edition of this chart. It will be canceled on Mar 6, 2024  
34th Ed. Mar. 2017. Last Correction: 9/5/2023. Cleared through:  
LNM: 0724 (2/13/2024), NM: 0924 (3/2/2024)

This chart was distributed as a PDF (Portable Document Format). Printing PDFs may alter this chart. This chart was distributed as a PDF (Portable Document Format). Printing PDFs may alter charts provided by NOAA certified Print on Demand (POD) providers fulfill a vessel's requirement to carry a navigational chart "published by the National Ocean Service" in accordance with federal regulations, including but not limited to 33 C.F.R. 164.33(a), 33 C.F.R. 164.72(b), and 46 C.F.R. 28.225(a). POD charts meet stringent print standards and can be recognized by an official certification of authenticity printed on the chart. A list of POD providers can be found at: [nauticalcharts.noaa.gov/pod](http://nauticalcharts.noaa.gov/pod)