

# BookletChart™

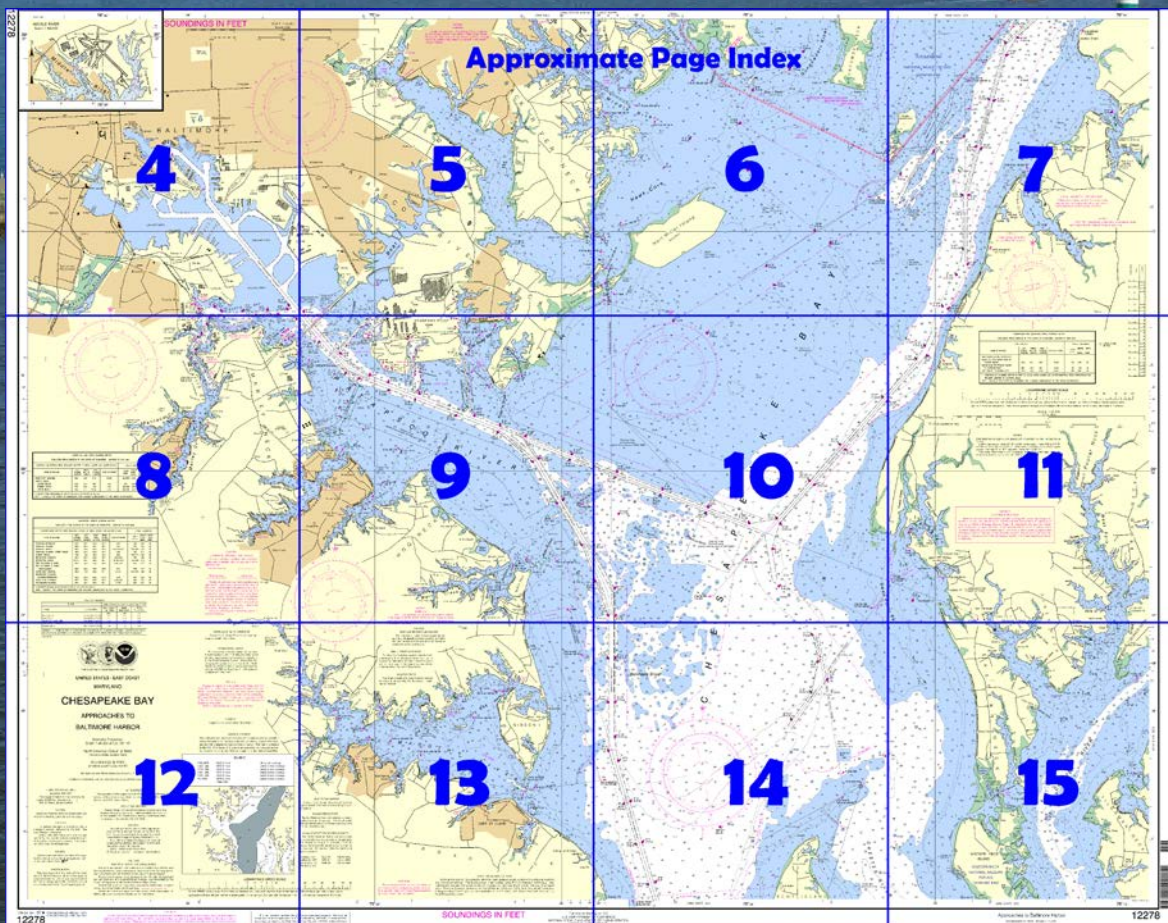


## **Chesapeake Bay – Approaches to Baltimore Harbor** NOAA Chart 12278

*A reduced-scale NOAA nautical chart for small boaters*  
*When possible, use the full-size NOAA chart for navigation.*



- Complete, reduced-scale nautical chart
- Print at home for free
- Convenient size
- Up-to-date with Notices to Mariners
- Compiled by NOAA's Office of Coast Survey, the nation's chartmaker



**Published by the**  
**National Oceanic and Atmospheric Administration**  
**National Ocean Service**  
**Office of Coast Survey**  
[www.NauticalCharts.NOAA.gov](http://www.NauticalCharts.NOAA.gov)  
**888-990-NOAA**

### What are Nautical Charts?

Nautical charts are a fundamental tool of marine navigation. They show water depths, obstructions, buoys, other aids to navigation, and much more. The information is shown in a way that promotes safe and efficient navigation. Chart carriage is mandatory on the commercial ships that carry America's commerce. They are also used on every Navy and Coast Guard ship, fishing and passenger vessels, and are widely carried by recreational boaters.

### What is a BookletChart™?

This BookletChart is made to help recreational boaters locate themselves on the water. It has been reduced in scale for convenience, but otherwise contains all the information of the full-scale nautical chart. The bar scales have also been reduced, and are accurate when used to measure distances in this BookletChart. See the Note at the bottom of page 5 for the reduction in scale applied to this chart.

Whenever possible, use the official, full scale NOAA nautical chart for navigation. Nautical chart sales agents are listed on the Internet at <http://www.NauticalCharts.NOAA.gov>.

This BookletChart does NOT fulfill chart carriage requirements for regulated commercial vessels under Titles 33 and 44 of the Code of Federal Regulations.

### Notice to Mariners Correction Status

This BookletChart has been updated for chart corrections published in the U.S. Coast Guard Local Notice to Mariners, the National Geospatial Intelligence Agency Weekly Notice to Mariners, and, where applicable, the Canadian Coast Guard Notice to Mariners. Additional chart corrections have been made by NOAA in advance of their publication in a Notice to Mariners. The last Notices to Mariners applied to this chart are listed in the Note at the bottom of page 7. Coast Pilot excerpts are not being corrected.

For latest Coast Pilot excerpt visit the Office of Coast Survey website at <http://www.nauticalcharts.noaa.gov/nsd/searchbychart.php?chart=12278>



#### (Selected Excerpts from Coast Pilot)

**Bodkin Creek** has depths of 9 feet in the approaches and 7 to 9 feet into its branches. Shoaling to 3 feet is between Daybeacon 9 and Light 11.

**Back Creek.** A boatyard is in the upper part.

**Main Creek** is separated from Back Creek by **Spit Neck**. Both branches have depths of 7 to 9 feet almost to their heads.

**Graveyard Point.** Gasoline, diesel fuel, slips, and some marine supplies.

**Rock Creek** has depths of 11 feet almost to

the head. It is marked.

**Wall Cove;** centerline depths of 10 feet for most of its length but shoaling to 5 feet near the head. The Maryland Yacht Club piers have

depths of 13 feet. Available at Wall Cove and Rock Creek: marine supplies, gasoline, diesel fuel, and water.

**Stony Creek** has depths of 12 feet. The channel along the west side of the entrance is marked by a light and buoys; the east side is obstructed by rocks. A marina above the bridge has gasoline.

**Nabbs Creek** has depths of 12 feet almost to the head. A marina near the head has gasoline, diesel fuel, berths, and marine supplies.

**Back Cove** has depths of 12 feet to a boatyard. Gasoline is available.

**Caution.**—Large vessels transiting Craighill Channel Upper Range and Brewerton Channel Eastern Extension in the vicinity of Sevenfoot Knoll Light may generate large and dangerous wakes; waves as high as 10 to 12 feet have been reported. Small craft in the area are advised to use extreme caution.

**Tides and currents.**—Prolonged winds of constant direction may cause substantial variation in the tide. Currents in the harbor are 0.8 knot on the flood and ebb. (See the Tidal Current Tables for daily predictions.) In 1981, strong currents were reported in the vicinity of Fort Carroll and Brewerton Angle on the change of tides.

**Pilotage, Baltimore.**—Pilotage is compulsory for all foreign vessels and for U.S. vessels under register in the foreign trade bound to or from the port of Baltimore. Pilotage is optional for U.S. vessels under enrollment in the coastwise trade who have on board a pilot licensed by the Federal Government for these waters.

The Association of Maryland Pilots has an office in Baltimore (telephone: 410-276-1337, fax 410-276-1364, telex: 87-574 MARPILOTS BALTIMORE, cable address: MARPILOT BALTIMORE). They provide service to any port in Maryland and service between Baltimore and the entrance of the Chesapeake Bay at Cape Henry, VA. The pilot office also monitors VHF-FM channel 11.

The Chesapeake and Interstate Pilots Association offers pilot services to U.S. vessels, engaged in the coastwise trade, and public vessels to or from Baltimore, via the Chesapeake Bay if the vessel is entering from sea at Cape Henry or transiting between any port or place on the Chesapeake Bay and its tributaries. Pilot service is also offered to vessels to or from Baltimore that are transiting the Chesapeake and Delaware Canal. Pilots will meet vessels upon prior arrangement at Cape Henlopen or any port or place on the Delaware Bay and River, at Cape Henry or any port or place on the Chesapeake Bay and its tributaries. Pilots will also provide all pilot services required from the port of departure to the port of arrival. Arrangements for pilots may be made through the ships' agents or the pilot office in Norfolk (telephone, 757-855-2733). Interport Pilots Agency, Inc. offers pilotage to public vessels and private vessels in the coastal trade operating between Baltimore Harbor and many northeast ports via the Chesapeake and Delaware Canal. The 24 hour telephone number is 732-787-5554 and the e-mail address is: [interport@verizon.net](mailto:interport@verizon.net). Additional information about Interport Pilots can be obtained at <http://www.interportpilots.com>.

**Quarantine, customs, immigration, and agricultural quarantine.**—(See chapter 3, Vessel Arrival Inspections, and appendix for addresses.)

**Warning.**—Small-craft operators in Frog Mortar Creek are advised to use caution in the vicinity of Martin State Airport. Small-craft with masts exceeding 37 feet in height above the waterline create an obstruction to low-flying aircraft. Operators of such vessels transiting Frog Mortar Creek should contact Martin State Airport Control Tower by telephone at 410-238-1008 when visibility is less than 1.0 statute mile so approaching aircraft can be warned. Tower operations are from 0600 to 2200 daily.

### U.S. Coast Guard Rescue Coordination Center 24 hour Regional Contact for Emergencies

RCC Norfolk

Commander

5th CG District

Norfolk, VA

(575) 398-6231

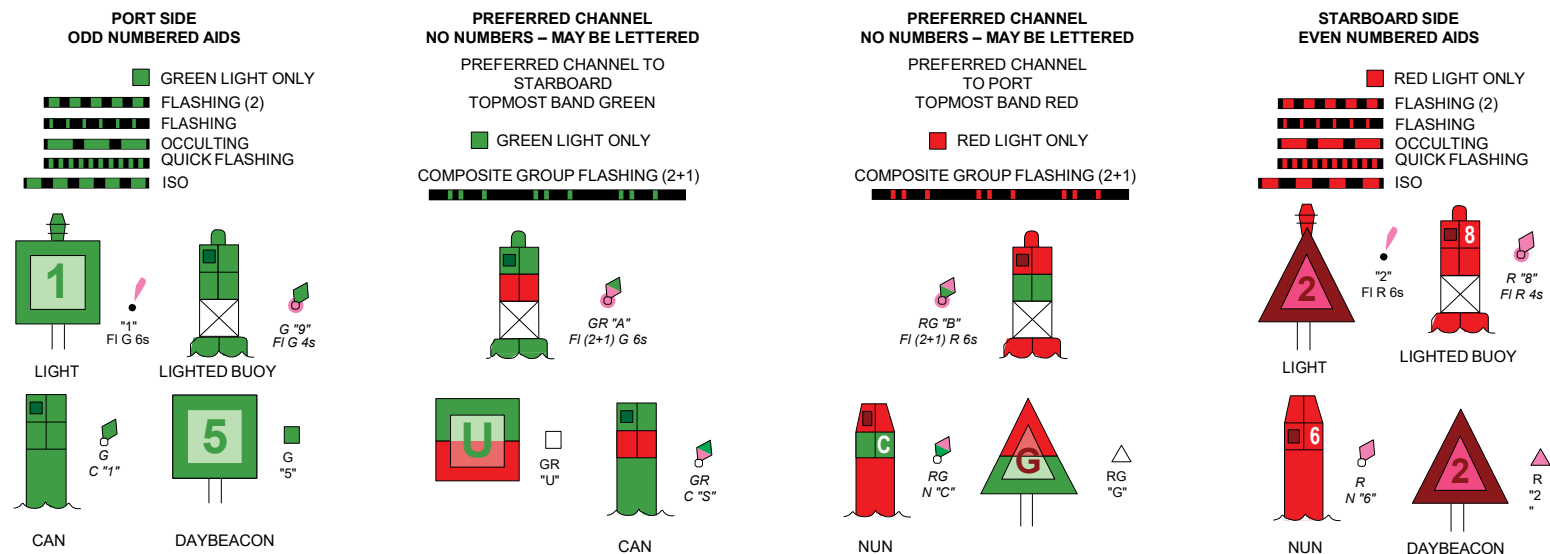
# Navigation Manager Regions



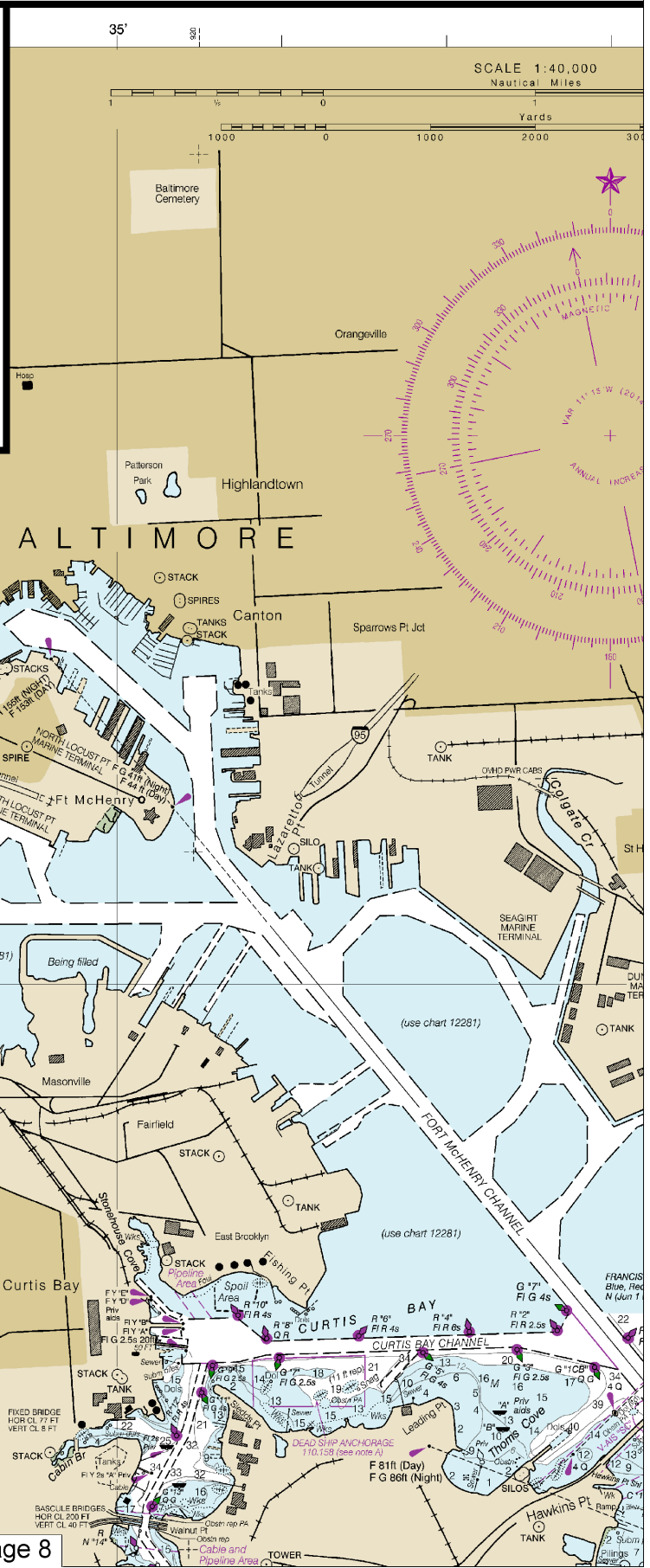
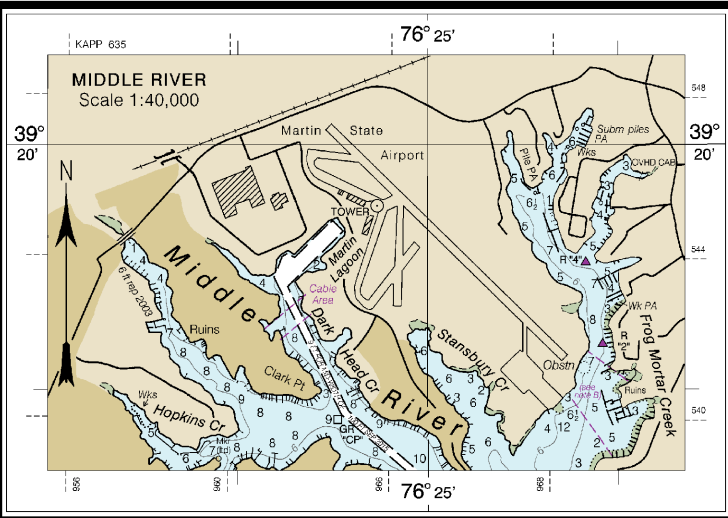
To make suggestions, ask questions, or report a problem with a chart, go to <https://www.nauticalcharts.noaa.gov/customer-service/assist/>

## Lateral System As Seen Entering From Seaward

on navigable waters except Western Rivers



For more information on aids to navigation, including those on Western Rivers, please consult the latest USCG Light List for your area. These volumes are available online at <http://www.navcen.uscg.gov>



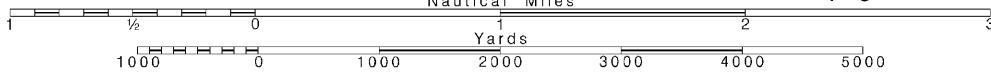
Joins page 8

Note: Chart grid lines are aligned with true north.

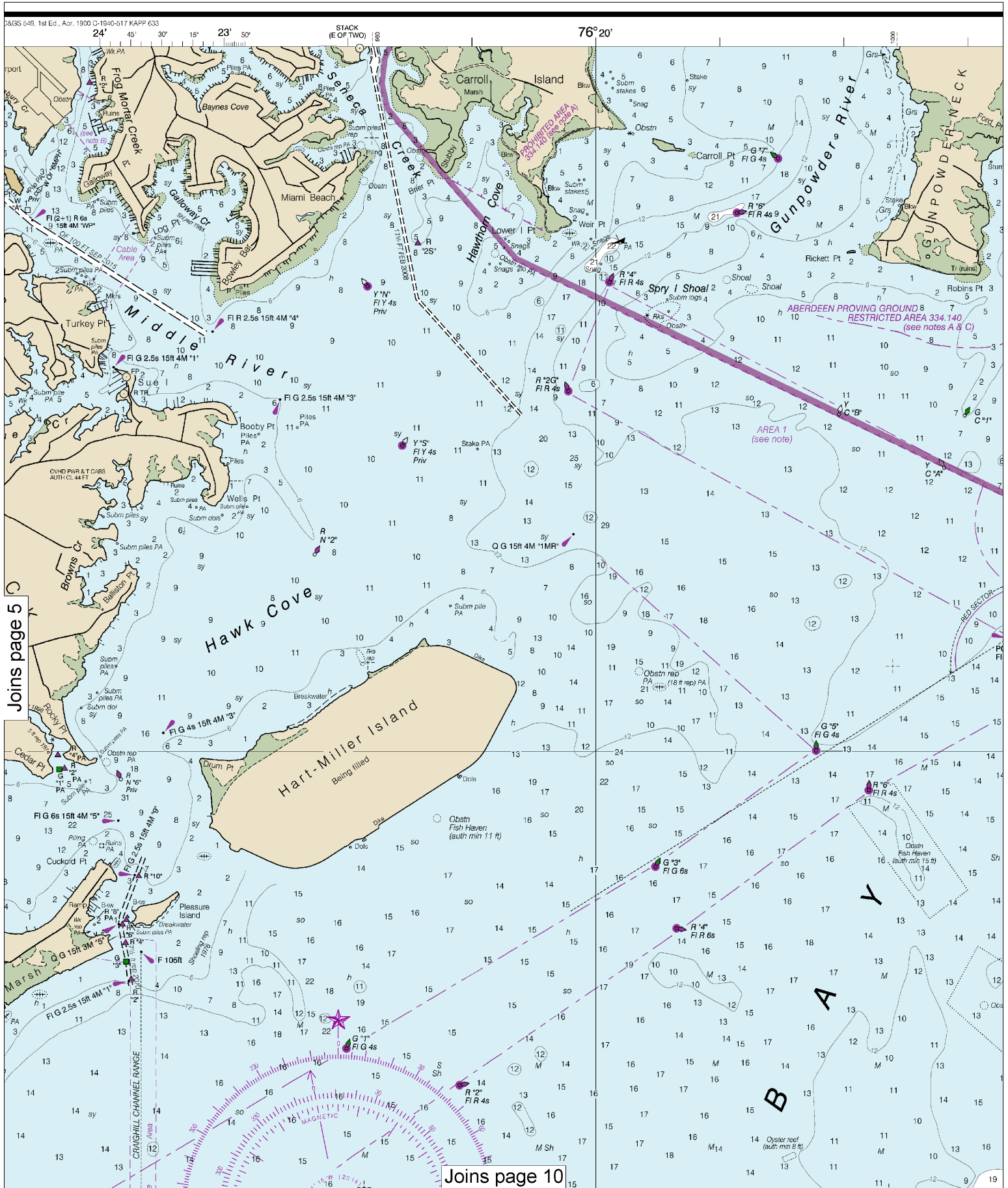
Printed at reduced scale.

SCALE 1:40,000  
Nautical Miles

See Note on page 5.







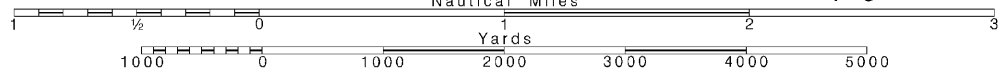
6

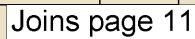
Note: Chart grid lines are aligned with true north.

Printed at reduced scale.

SCALE 1:40,000

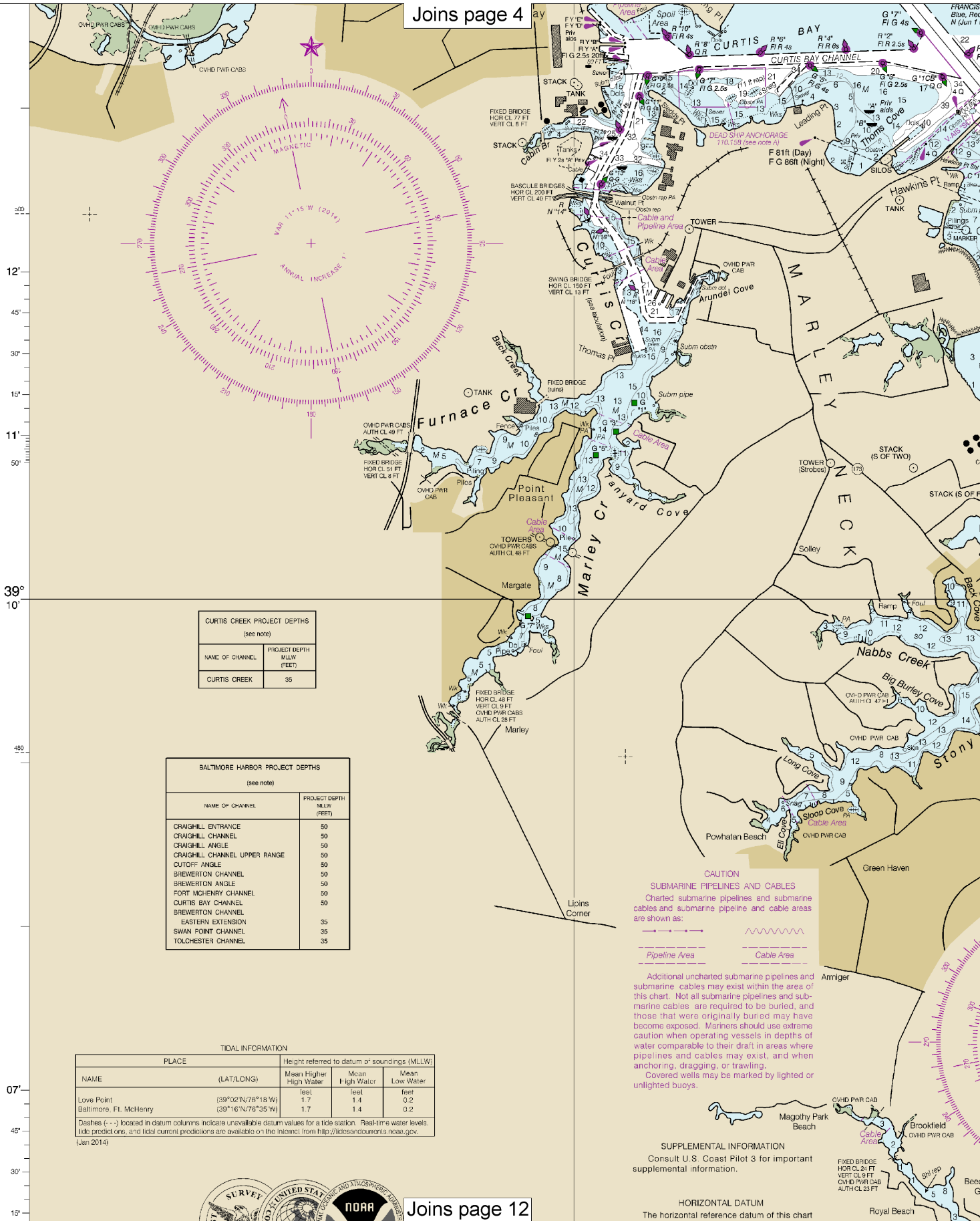
See Note on page 5.





7

Joins page 4



Joins page 12

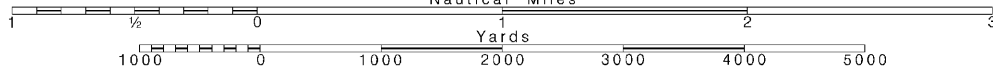
8

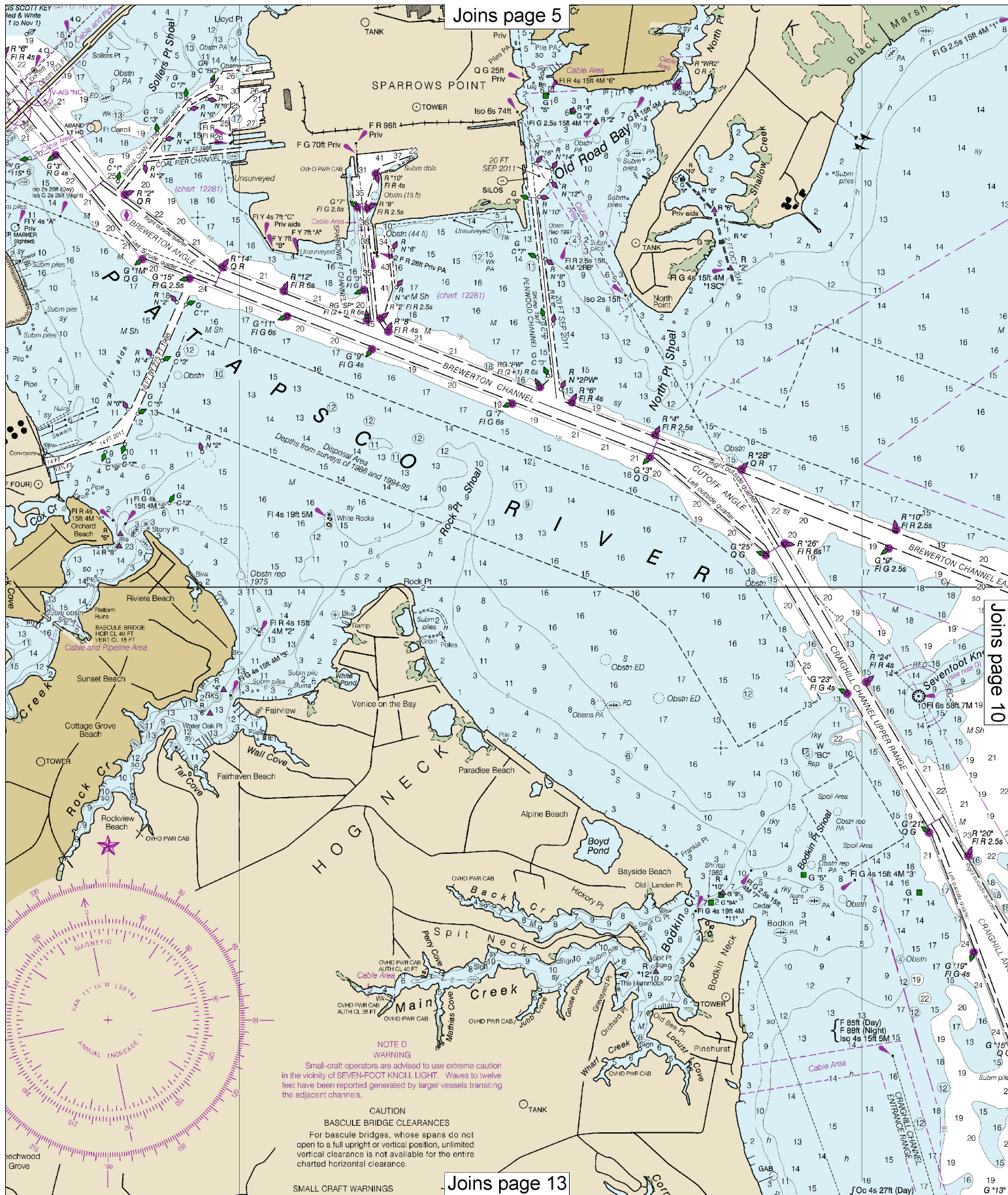
Note: Chart grid lines are aligned with true north.

Printed at reduced scale.

SCALE 1:40,000  
Nautical Miles

See Note on page 5.









# TIDAL INFORMATION

PLACE		Height referred to datum of soundings (MLLW)		
NAME	(LAT/LONG)	Mean Higher High Water	Mean High Water	Mean Low Water
Love Point	(39°02'N/76°18'W)	1.7	1.4	0.2
Baltimore, Ft. McHenry	(39°16'N/76°35'W)	1.7	1.4	0.2

Dashes (---) located in datum columns indicate unavailable datum values for a tide station. Real-time water levels, tides predicted, and tidal current predictions are available on the Internet from <http://tidesandcurrents.noaa.gov>. (Jan 2014)



UNITED STATES - EAST COAST  
MARYLAND

## CHESAPEAKE BAY

### APPROACHES TO BALTIMORE HARBOR

Mercator Projection  
Scale 1:40,000 at Lat. 39°10'

North American Datum of 1983  
(World Geodetic System of 1984)

SOUNDINGS IN FEET  
AT MEAN LOWER LOW WATER

For Symbols and Abbreviations see Chart No. 1

Additional information can be obtained at [nauticalcharts.noaa.gov](http://nauticalcharts.noaa.gov).

#### PLANE COORDINATE GRID (based on NAD 1927)

The Maryland State Grid is indicated on this chart at 20,000 foot intervals thus:  
The last three digits are omitted.

#### CAUTION

Improved channels shown by broken lines are subject to shoaling, particularly at the edges.

#### CAUTION

Temporary changes or defects in aids to navigation are not indicated on this chart. See Local Notice to Mariners.

During some winter months or when endangered by ice, certain aids to navigation are replaced by other types or removed. For details see U.S. Coast Guard Light List.

#### CAUTION

Mariners are warned to stay clear of the protective riprap surrounding navigational light structures shown thus:

#### RACING BUOYS

Racing buoys within the limits of this chart are not shown hereon. Information may be obtained from the U.S. Coast Guard District Offices as racing and other private buoys are not all listed in the U.S. Coast Guard Light List.

#### AUTHORITIES

Hydrography and topography by the National Ocean Service, Coast Survey, with additional data from the Corps of Engineers, Geological Survey, and U.S. Coast Guard.

#### POLLUTION REPORTS

Report all spills of oil and hazardous substances to the National Response Center via 1-800-424-8802 (toll free), or to the nearest U.S. Coast Guard facility if telephone communication is impossible (33 CFR 153).

#### CAUTION

Limitations on the use of radio signals as aids to marine navigation can be found in the U.S. Coast Guard Light Lists and National Geospatial-Intelligence Agency Publication 117.

Radio direction-finder bearings to commercial broadcasting stations are subject to error and should be used with caution.

Station positions are shown thus:

○ (Accurate location)    ◐ (Approximate location)

#### CAUTION

##### FISH TRAP AREAS AND STRUCTURES

Mariners are warned that numerous uncharted duck blinds and fishing structures, some submerged, may exist in the fish trap areas. Such structures are not charted unless known to be permanent.

Regulations to assure clear passage to and through dredged and natural channels, and to established landings, are prescribed by the Corps of Engineers in the Code of Federal Regulations.

Definite limits of fish trap areas have been established in some areas, and these limits are shown thus:  
Where definite limits have not been prescribed, the location of fishing structures is restricted only by the regulations.

This chart is not an submarine pipelines and submarine cables are required to be buried, and those that were originally buried may have become exposed. Mariners should use extreme caution when operating vessels in depths of water comparable to their draft in areas where pipelines and cables may exist, and when anchoring, dragging, or trawling.  
Covered wells may be marked by lighted or unlighted buoys.

**SUPPLEMENTAL INFORMATION**  
Consult U.S. Coast Pilot 3 for important supplemental information.

#### HORIZONTAL DATUM

The horizontal reference datum of this chart is North American Datum of 1983 (NAD 83), which for charting purposes is considered equivalent to the World Geodetic System 1984 (WGS 84). Geographic positions referred to the North American Datum of 1927 must be corrected an average of 0.392" northward and 1.140" eastward to agree with this chart.

#### NOTE A

Navigation regulations are published in Chapter 2, U.S. Coast Pilot 3. Additions or revisions to Chapter 2 are published in the Notice to Mariners. Information concerning the regulations may be obtained at the Office of the Commander, 5th Coast Guard District in Portsmouth, Virginia or at the Office of the District Engineer, Corps of Engineers in Baltimore, Maryland.  
Refer to charted regulation section numbers.

#### HEIGHTS

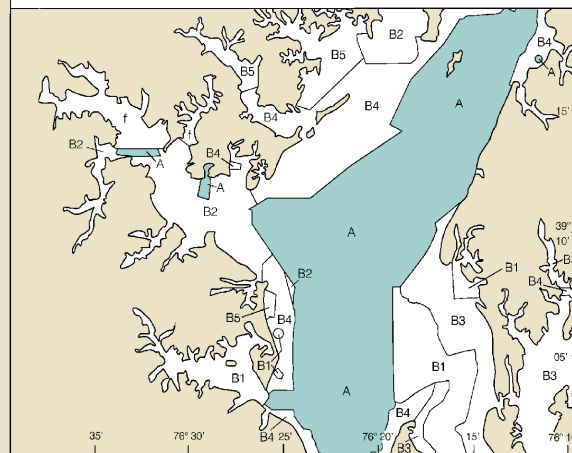
Heights in feet above Mean High Water.

#### SOURCE DIAGRAM

The outlined areas represent the limits of the most recent hydrographic survey information that has been evaluated for charting. Surveys have been banded in this diagram by date and type of survey. Channels maintained by the U.S. Army Corps of Engineers are periodically resurveyed and are not shown on this diagram. Refer to Chapter 1, United States Coast Pilot.

#### SOURCE

A	1990-2005	NOS Surveys	full bottom coverage
B1	1990-1999	NOS Surveys	partial bottom coverage
B2	1970-1989	NOS Surveys	partial bottom coverage
B3	1940-1969	NOS Surveys	partial bottom coverage
B4	1900-1939	NOS Surveys	partial bottom coverage
B5	Pre-1900	NOS Surveys	partial bottom coverage
f		Chart 12281	



#### CAUTION

This chart has been corrected from the Notice to Mariners (NM) published weekly by the National Geospatial-Intelligence Agency and the Local Notice to Mariners (LNM) issued periodically by each U.S. Coast Guard district to the dates shown in the lower left hand corner. Chart updates corrected from Notice to Mariners published after the dates shown in the lower left hand corner are available at [nauticalcharts.noaa.gov](http://nauticalcharts.noaa.gov).

NOAA encourages you to visit <http://nauticalcharts.noaa.gov> about this chart at <http://nauticalcharts.noaa.gov>

12278

This is the Last Edition of this chart. It will be canceled on Mar 6, 2024  
80th Ed., May 2020. Last Correction: 2/12/2024. Cleared through:  
LNM: 0724 (2/13/2024), NM: 0924 (3/2/2024)

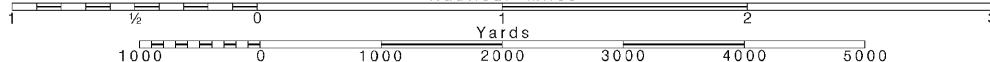
12

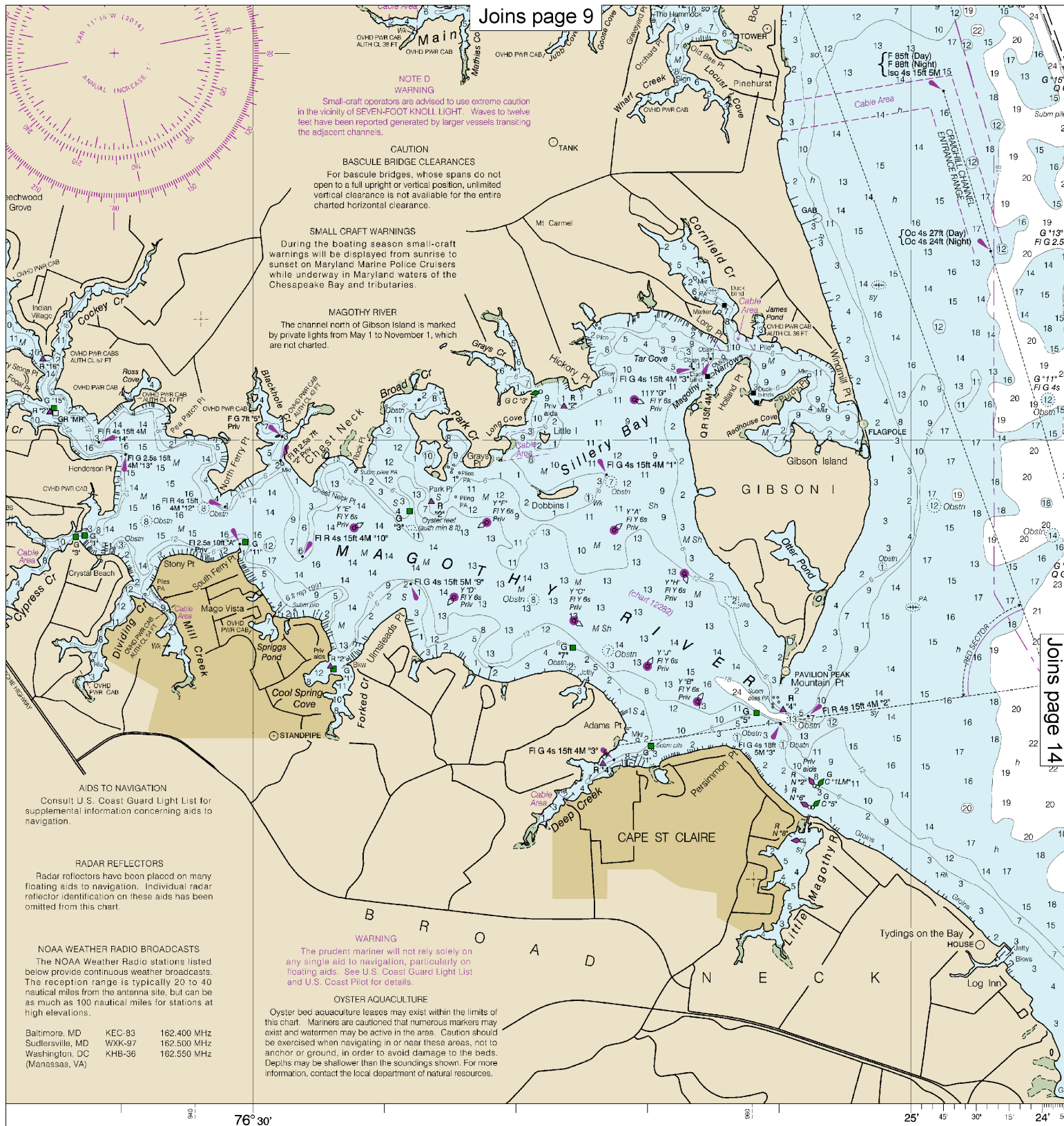
Note: Chart grid lines are aligned with true north.

Printed at reduced scale.

SCALE 1:40,000  
Nautical Miles

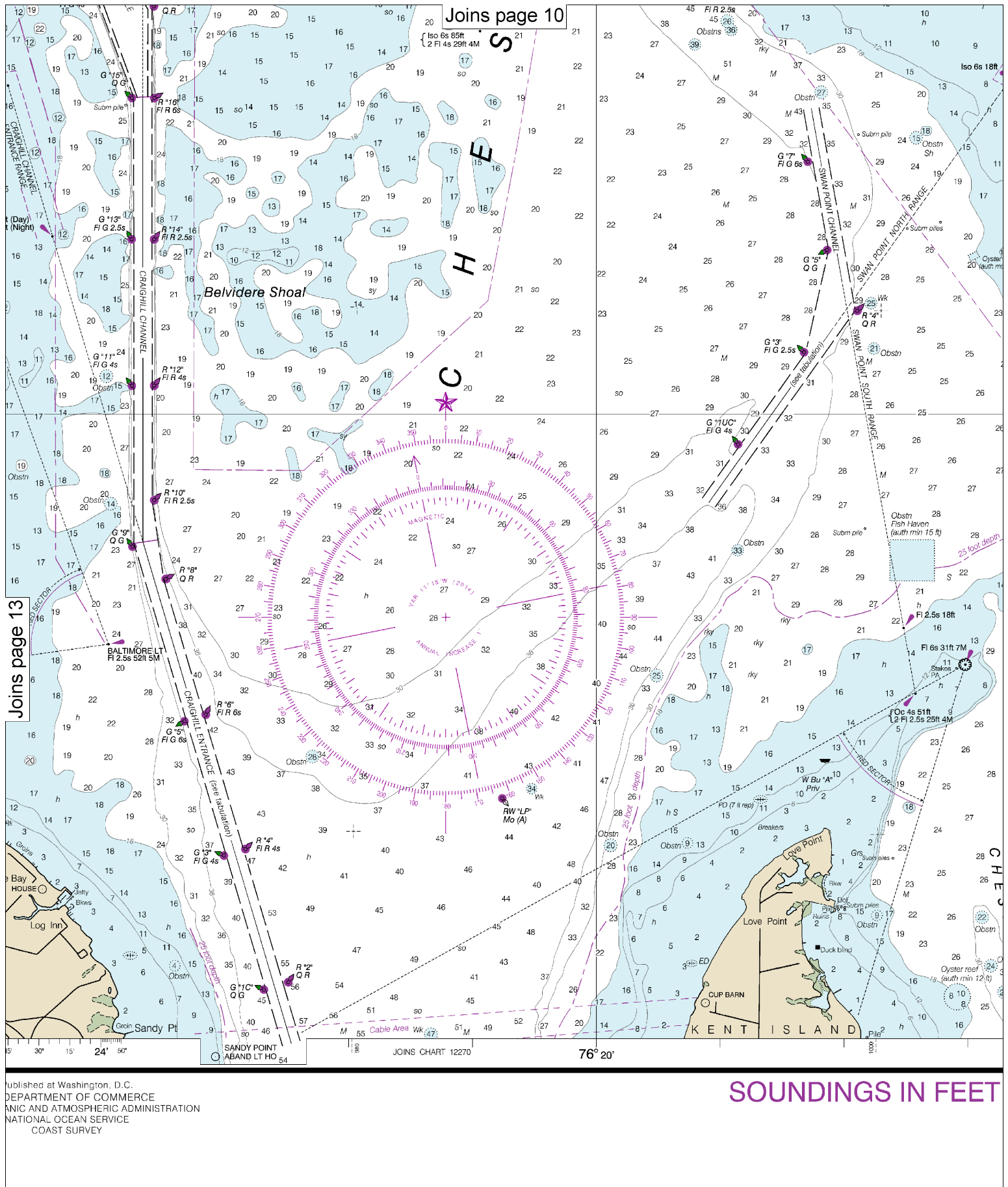
See Note on page 5.





Users to submit inquiries, discrepancies or comments  
[www.nauticalcharts.noaa.gov/start/contact.htm](http://www.nauticalcharts.noaa.gov/start/contact.htm)

Published at Washington, D.  
 U.S. DEPARTMENT OF COMMERCE  
 NATIONAL OCEANIC AND ATMOSPHERIC ADMINISTRATION  
 NATIONAL OCEAN SURVEY



Published at Washington, D.C.  
 DEPARTMENT OF COMMERCE  
 NAUTIC AND ATMOSPHERIC ADMINISTRATION  
 NATIONAL OCEAN SERVICE  
 COAST SURVEY

SOUNDINGS IN FEET

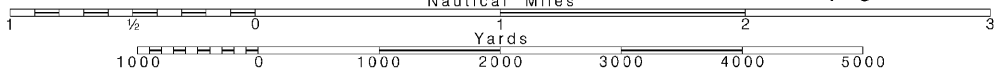
14

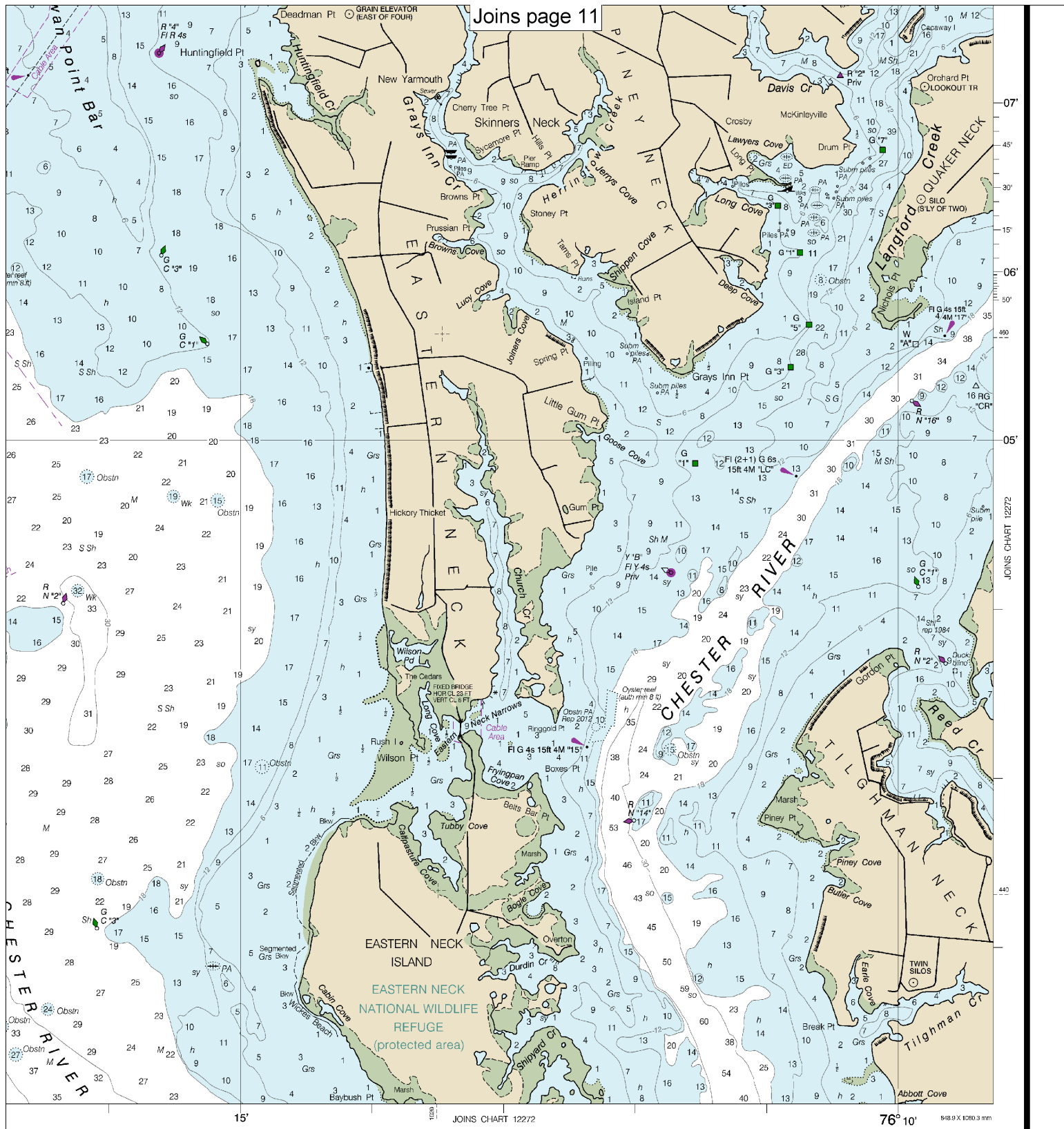
Note: Chart grid lines are aligned with true north.

Printed at reduced scale.

SCALE 1:40,000  
 Nautical Miles

See Note on page 5.





FATHOMS	2	3	4	5	6	7	8	9	10	11	12	13	14	15	16	17
FATHOMS	6	12	18	24	30	36	42	48	54	60	66	72	78	84	90	96
METERS	1	2	3	4	5	6	7	8	9	10	11	12	13	14	15	16

Approaches to Baltimore Harbor  
SOUNDINGS IN FEET - SCALE 1:40,000

12278



## VHF Marine Radio channels for use on the waterways:

**Channel 6** – Inter-ship safety communications.

**Channel 9** – Communications between boats and ship-to-coast.

**Channel 13** – Navigation purposes at bridges, locks, and harbors.

**Channel 16** – Emergency, distress and safety calls to Coast Guard and others, and to initiate calls to other

vessels. Contact the other vessel, agree to another channel, and then switch.

**Channel 22A** – Calls between the Coast Guard and the public. Severe weather warnings, hazards to navigation and safety warnings are broadcast here.

**Channels 68, 69, 71, 72 and 78A** – Recreational boat channels.

**Getting and Giving Help** — Signal other boaters using visual distress signals (flares, orange flag, lights, arm signals); whistles; horns; and on your VHF radio. You are required by law to help boaters in trouble. Respond to distress signals, but do not endanger yourself.



**NOAA Weather Radio All Hazards (NWR)** is a nationwide network of radio stations broadcasting continuous weather information directly from the nearest National Weather Service office. NWR broadcasts official Weather Service warnings, watches, forecasts and other hazard information 24 hours a day, 7 days a week.

<http://www.nws.noaa.gov/nwr/>

## Distress Call Procedures

- Make sure radio is on.
- Select Channel 16.
- Press/Hold the transmit button.
- Clearly say: "MAYDAY, MAYDAY, MAYDAY."
- Also give: Vessel Name and/or Description; Position and/or Location; Nature of Emergency; Number of People on Board.
- Release transmit button.
- Wait for 10 seconds — If no response Repeat MAYDAY call.

**HAVE ALL PERSONS PUT ON LIFE JACKETS!**

## Quick References

Nautical chart related products and information	—	<a href="http://www.nauticalcharts.noaa.gov">http://www.nauticalcharts.noaa.gov</a>
Interactive chart catalog	—	<a href="http://www.charts.noaa.gov/InteractiveCatalog/nrnc.shtml">http://www.charts.noaa.gov/InteractiveCatalog/nrnc.shtml</a>
Report a chart discrepancy	—	<a href="http://ocsddata.ncd.noaa.gov/idrs/discrepancy.aspx">http://ocsddata.ncd.noaa.gov/idrs/discrepancy.aspx</a>
Chart and chart related inquiries and comments	—	<a href="http://ocsddata.ncd.noaa.gov/idrs/inquiry.aspx?frompage=ContactUs">http://ocsddata.ncd.noaa.gov/idrs/inquiry.aspx?frompage=ContactUs</a>
Chart updates (LNM and NM corrections)	—	<a href="http://www.nauticalcharts.noaa.gov/mcd/updates/LNM_NM.html">http://www.nauticalcharts.noaa.gov/mcd/updates/LNM_NM.html</a>
Coast Pilot online	—	<a href="http://www.nauticalcharts.noaa.gov/nsd/cpdownload.htm">http://www.nauticalcharts.noaa.gov/nsd/cpdownload.htm</a>
Tides and Currents	—	<a href="http://tidesandcurrents.noaa.gov">http://tidesandcurrents.noaa.gov</a>
Marine Forecasts	—	<a href="http://www.nws.noaa.gov/om/marine/home.htm">http://www.nws.noaa.gov/om/marine/home.htm</a>
National Data Buoy Center	—	<a href="http://www.ndbc.noaa.gov/">http://www.ndbc.noaa.gov/</a>
NowCoast web portal for coastal conditions	—	<a href="http://www.nowcoast.noaa.gov/">http://www.nowcoast.noaa.gov/</a>
National Weather Service	—	<a href="http://www.weather.gov/">http://www.weather.gov/</a>
National Hurricane Center	—	<a href="http://www.nhc.noaa.gov/">http://www.nhc.noaa.gov/</a>
Pacific Tsunami Warning Center	—	<a href="http://ptwc.weather.gov/">http://ptwc.weather.gov/</a>
Contact Us	—	<a href="http://www.nauticalcharts.noaa.gov/staff/contact.htm">http://www.nauticalcharts.noaa.gov/staff/contact.htm</a>



— For the latest news from Coast Survey, follow **@NOAAcharts**



This Booklet chart has been designed for duplex printing (printed on front and back of one sheet). If a duplex option is not available on your printer, you may print each sheet and arrange them back-to-back to allow for the proper layout when viewing.